

(#5622) WINGFIELD COMMONS UNIT 4

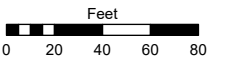
PORTION OF THE NE ¼ OF SE ¼ SECTION 18
T20N - R21E

Assessor's Map Number

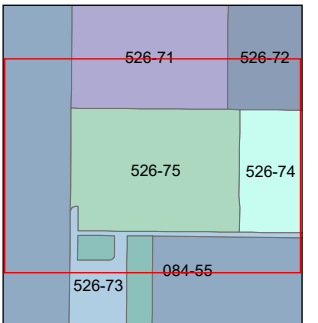
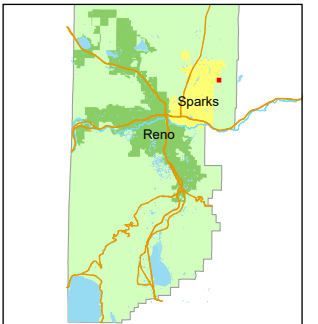
526-75

STATE OF NEVADA
WASHOE COUNTY
ASSESSOR'S OFFICE

1001 East Ninth Street, Building D
Reno, Nevada 89512
(775) 328-2231



1 inch = 80 feet



created by: JKF 4/24/2026

updated: _____

area previously shown on map(s):

526-06

NOTE: This map was prepared for the use of the Washoe County Assessor for assessment and illustrative purposes only. It does not represent a survey of the premises. No liability is assumed as to the sufficiency or accuracy of the data delineated hereon.

PRIMARY ACCESS EASEMENT
TO VISTA BLVD. PER GOLDEN
EAGLE REGIONAL PARK
MASTER PLAN

C.A. K
526-751-14
2836 sf

C.A. L
526-752-27
5668 sf

PARK MESA WAY

CEDAR BLUFF WAY

(PRIVATE)

(STREETS)
526-751-15
33706 sf

CRYSTAL CREEK WAY

(PRIVATE)

(STREETS)
526-753-14
33766 sf

DESERT BELL WAY

(PRIVATE)

HORIZON SUN WAY

C.A. = COMMON AREA

30.13	49.33	348	49.27	347	49.27	346	49.27	345	49.27	344	49.27	343	49.27	342	49.27	341	49.27	340	49.27	339	49.27	338	49.27	337	49.27	336
77.00	97.00	526-751-13 4785 sf	97.00	526-751-12 4779 sf	97.00	526-751-11 4779 sf	97.00	526-751-10 4779 sf	97.00	526-751-09 4779 sf	97.00	526-751-08 4779 sf	97.00	526-751-07 4779 sf	97.00	526-751-06 4779 sf	97.00	526-751-05 4779 sf	97.00	526-751-04 4779 sf	97.00	526-751-03 4779 sf	97.00	526-751-02 4779 sf	97.00	526-751-01 4779 sf
49.33	49.27	49.27	49.27	49.27	49.27	49.27	49.27	49.27	49.27	49.27	49.27	49.27	49.27	49.27	49.27	49.27	49.27	49.27	49.27	49.27	49.27	49.27	49.27	49.27	49.27	49.27

37.42	49.33		49.27		49.27		49.27		49.27		49.27		49.27		49.27		49.27		49.27		49.27		49.27		49.27		49.27
97.00	97.00	526-752-01 4785 sf	97.00	526-752-02 4779 sf	97.00	526-752-03 4779 sf	97.00	526-752-04 4779 sf	97.00	526-752-05 4779 sf	97.00	526-752-06 4779 sf	97.00	526-752-07 4779 sf	97.00	526-752-08 4779 sf	97.00	526-752-09 4779 sf	97.00	526-752-10 4779 sf	97.00	526-752-11 4779 sf	97.00	526-752-12 4779 sf	97.00	526-752-13 4779 sf	
49.33	49.27	349	49.27	350	49.27	351	49.27	352	49.27	353	49.27	354	49.27	355	49.27	356	49.27	357	49.27	358	49.27	359	49.27	360	49.27	361	
97.00	97.00	394	97.00	393	97.00	392	97.00	391	97.00	390	97.00	389	97.00	388	97.00	387	97.00	386	97.00	385	97.00	384	97.00	383	97.00	382	
154.00	49.33	526-752-26 4785 sf	49.27	526-752-25 4779 sf	49.27	526-752-24 4779 sf	49.27	526-752-23 4779 sf	49.27	526-752-22 4779 sf	49.27	526-752-21 4779 sf	49.27	526-752-20 4779 sf	49.27	526-752-19 4779 sf	49.27	526-752-18 4779 sf	49.27	526-752-17 4779 sf	49.27	526-752-16 4779 sf	49.27	526-752-15 4779 sf	49.27	526-752-14 4779 sf	
37.42	49.33	49.27	49.27	49.27	49.27	49.27	49.27	49.27	49.27	49.27	49.27	49.27	49.27	49.27	49.27	49.27	49.27	49.27	49.27	49.27	49.27	49.27	49.27	49.27	49.27	49.27	

97.00	51.50		51.50		51.50		51.50		51.50		51.50		51.50		51.50		51.50		51.50		51.50		51.50		51.50		25.00
97.00	97.00	526-753-01 4996 sf	97.00	526-753-02 4996 sf	97.00	526-753-03 4996 sf	97.00	526-753-04 4996 sf	97.00	526-753-05 4996 sf	97.00	526-753-06 4996 sf	97.00	526-753-07 4996 sf	97.00	526-753-08 4996 sf	97.00	526-753-09 4996 sf	97.00	526-753-10 4996 sf	97.00	526-753-11 4996 sf	97.00	526-753-12 4996 sf	97.00	97.00	
51.50	395	51.50	396	51.50	397	51.50	398	51.50	399	51.50	400	51.50	401	51.50	402	51.50	403	51.50	404	51.50	405	51.50	406	25.00	25.00		

C.A. N
526-753-13
2425 sf