

(#5622) WINGFIELD COMMONS UNIT 4

PORTION OF THE NE ¼ OF SE ¼ SECTION 18
T20N - R21E

18 | 17

NO. 35-08E
162.48

49.27	335	49.27	334	49.27	333	49.27	332	49.27	331	49.27	330	49.27	329	49.27	328	49.27	327	54.00	326
	742																		
	526-742-10	526-742-09	526-742-08	526-742-07	526-742-06	526-742-05	526-742-04	526-742-03	526-742-02	526-742-01									
	4779 sf	4779 sf	4779 sf	4779 sf	4779 sf	4779 sf	4779 sf	4779 sf	4779 sf	5152 sf									
	97.00	97.00	97.00	97.00	97.00	97.00	97.00	97.00	97.00	97.00	97.00	97.00	97.00	97.00	97.00	97.00	97.00	97.00	97.00
	49.27	49.27	49.27	49.27	49.27	49.27	49.27	49.27	49.27	49.27	49.27	49.27	49.27	49.27	49.27	49.27	49.27	34.00	31.42

CEDAR BLUFF WAY (PRIVATE)

49.27		49.27		49.27		49.27		49.27		49.27		49.27		49.27		49.27		49.27		34.00
	743																			
	526-743-01	526-743-02	526-743-03	526-743-04	526-743-05	526-743-06	526-743-07	526-743-08	526-743-09	526-743-10										
	4779 sf	4779 sf	4779 sf	4779 sf	4779 sf	4779 sf	4779 sf	4779 sf	4779 sf	5152 sf										
	97.00	97.00	97.00	97.00	97.00	97.00	97.00	97.00	97.00	97.00	97.00	97.00	97.00	97.00	97.00	97.00	97.00	97.00	97.00	97.00
	49.27	49.27	49.27	49.27	49.27	49.27	49.27	49.27	49.27	49.27	49.27	49.27	49.27	49.27	49.27	49.27	49.27	49.27	49.27	34.00

CRYSTAL CREEK WAY (PRIVATE) (STREETS)

49.00		49.00		49.00		49.00		49.00		49.00		49.00		49.00		49.00		49.00		34.00
	744																			
	526-744-01	526-744-02	526-744-03	526-744-04	526-744-05	526-744-06	526-744-07	526-744-08	526-744-09	526-744-10										
	4753 sf	4753 sf	4753 sf	4753 sf	4753 sf	4753 sf	4753 sf	4753 sf	4753 sf	5152 sf										
	97.00	97.00	97.00	97.00	97.00	97.00	97.00	97.00	97.00	97.00	97.00	97.00	97.00	97.00	97.00	97.00	97.00	97.00	97.00	97.00
	49.00	49.00	49.00	49.00	49.00	49.00	49.00	49.00	49.00	49.00	49.00	49.00	49.00	49.00	49.00	49.00	49.00	49.00	49.00	34.00

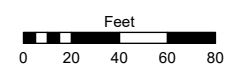
LAZY MEADOW WAY (PRIVATE)

	97.43	316																		
	49.00	526-741-01																		
	49.00	4772 sf																		
	97.36	97.36																		
	49.00	49.00																		
	49.00	317																		
	49.00	526-741-02																		
	49.00	4769 sf																		
	97.28	97.28																		
	49.00	49.00																		
	49.00	318																		
	49.00	526-741-03																		
	49.00	4765 sf																		
	97.20	97.20																		
	49.00	49.00																		
	49.00	319																		
	49.00	526-741-04																		
	49.00	4761 sf																		
	97.13	97.13																		
	49.00	49.00																		
	49.00	320																		
	49.00	526-741-05																		
	49.00	4757 sf																		
	97.05	97.05																		
	49.00	49.00																		
	49.00	321																		
	49.00	526-741-06																		
	49.00	4754 sf																		
	96.97	96.97																		
	49.00	49.00																		
	49.00	322																		
	49.00	526-741-07																		
	49.00	4750 sf																		
	96.90	96.90																		
	49.00	49.00																		
	49.00	323																		
	49.00	526-741-08																		
	49.00	4746 sf																		
	96.82	96.82																		
	49.00	49.00																		
	49.00	324																		
	49.00	526-741-09																		
	49.00	4742 sf																		
	96.75	96.75																		
	49.00	49.00																		
	49.00	741 325																		
	49.00	526-741-10																		
	49.00	5513 sf																		
	96.66	96.66																		
	56.85	56.85																		
	57.17	57.17																		

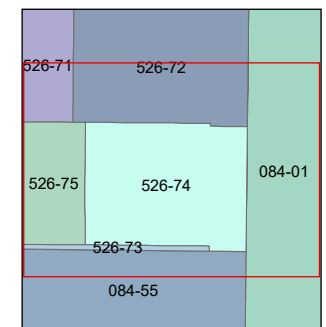
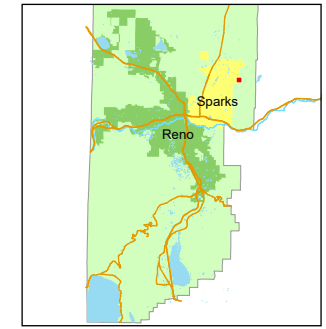
C.A. COMMON AREA

Assessor's Map Number
526-74

STATE OF NEVADA
WASHOE COUNTY
ASSESSOR'S OFFICE
1001 East Ninth Street, Building D
Reno, Nevada 89512
(775) 328-2231



1 inch = 80 feet



created by: JKF 4/24/2026
updated: _____

area previously shown on map(s):
526-06

NOTE: This map was prepared for the use of the Washoe County Assessor for assessment and illustrative purposes only. It does not represent a survey of the premises. No liability is assumed as to the sufficiency or accuracy of the data delineated herein.