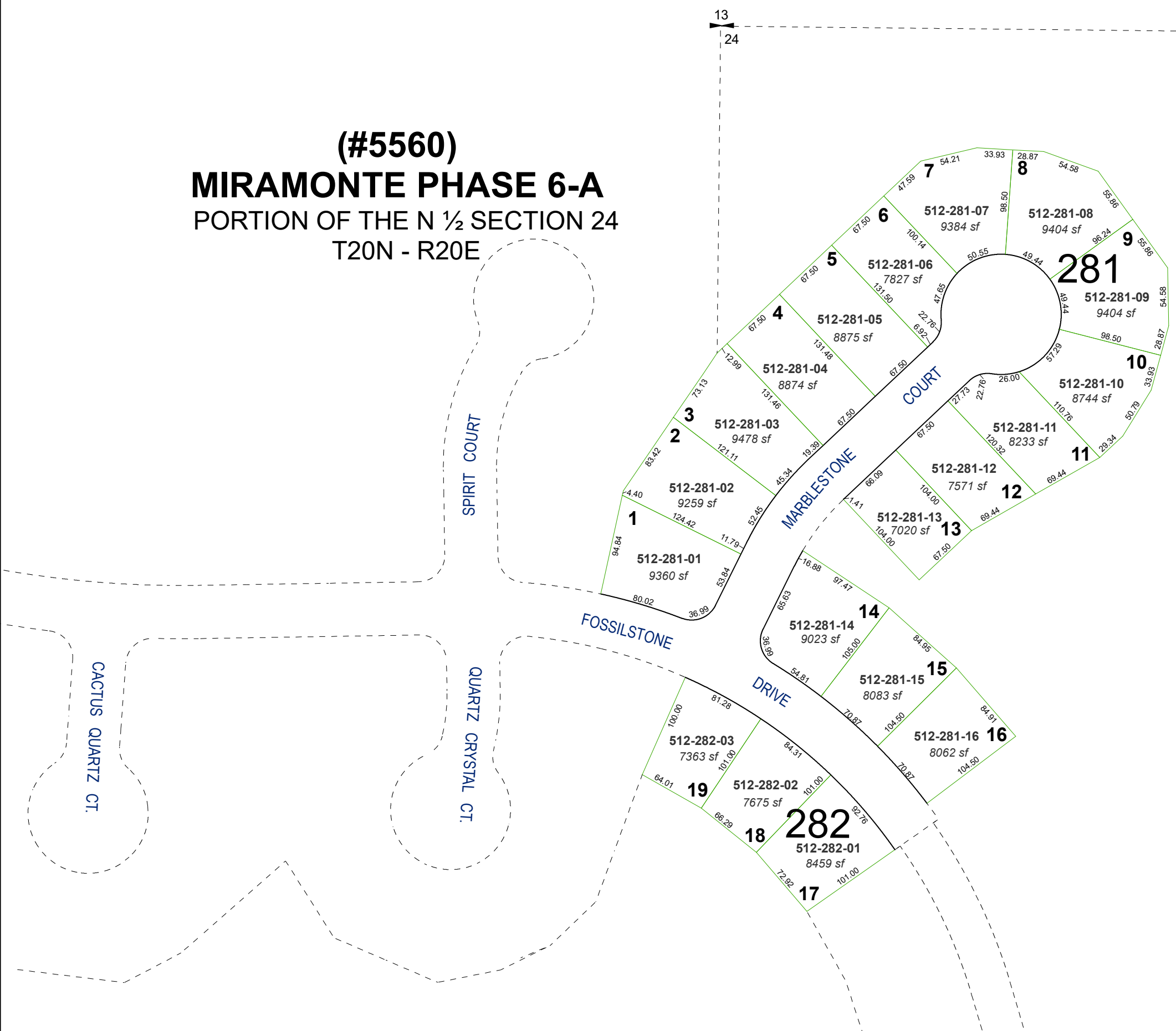


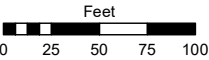
(#5560)
MIRAMONTE PHASE 6-A
PORTION OF THE N ½ SECTION 24
T20N - R20E



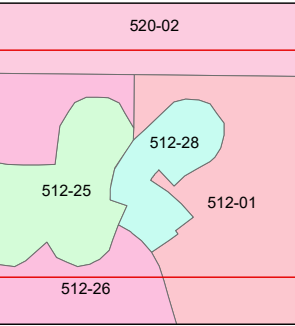
Assessor's Map Number

512-28

STATE OF NEVADA
WASHOE COUNTY
ASSESSOR'S OFFICE
1001 East Ninth Street, Building D
Reno, Nevada 89512
(775) 328-2231



1 inch = 100 feet



created by: JKF 5/17/2024

updated: _____

area previously shown on map(s):
512-01 & 26

NOTE: This map was prepared for the use of the Washoe County Assessor for assessment and illustrative purposes only. It does not represent a survey of the premises. No liability is assumed as to the sufficiency or accuracy of the data delineated hereon.