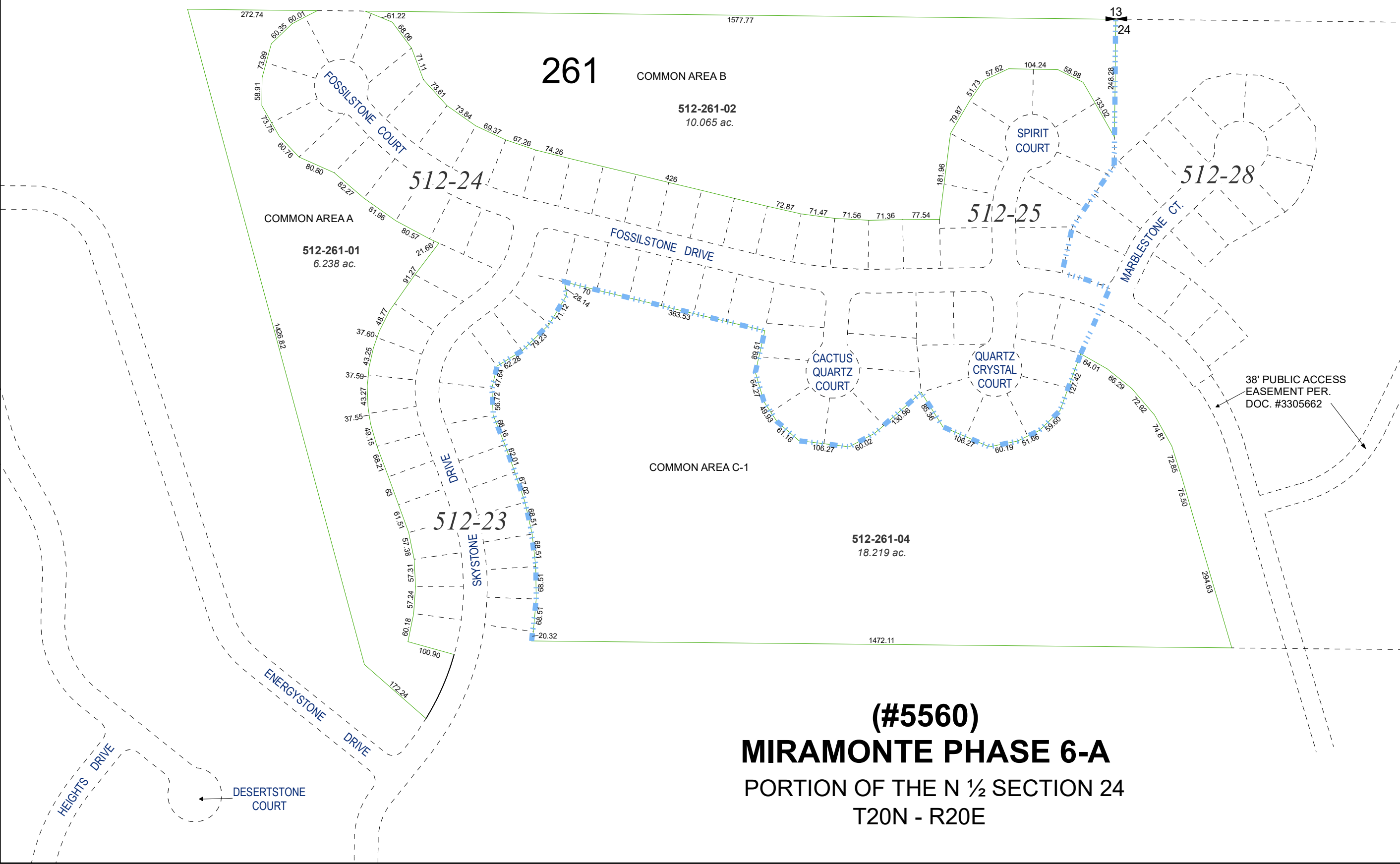


(#5358)  
MIRAMONTE PHASE 5-B



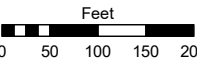
(#5560)  
MIRAMONTE PHASE 6-A  
PORTION OF THE N 1/2 SECTION 24  
T20N - R20E

Assessor's Map Number

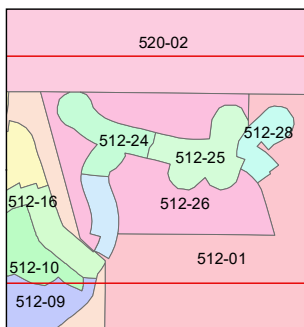
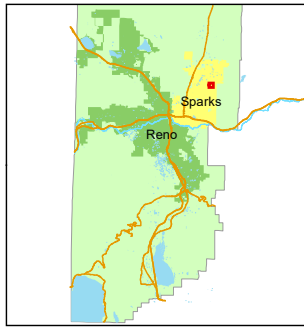
512-26

STATE OF NEVADA  
WASHOE COUNTY  
ASSESSOR'S OFFICE

1001 East Ninth Street, Building D  
Reno, Nevada 89512  
(775) 328-2231



1 inch = 200 feet



created by: JKF 3/26/2020

updated: JKF 5/17/24

area previously shown on map(s):  
512-01

NOTE: This map was prepared for the use of the Washoe County Assessor for assessment and illustrative purposes only. It does not represent a survey of the premises. No liability is assumed as to the sufficiency or accuracy of the data delineated hereon.