

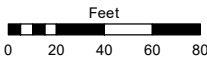
**(#5579)  
PANTHER VIEW  
HIGHLANDS**

PORTION OF SW ¼  
OF SE ¼ OF SECTION 14  
T20N - R19E

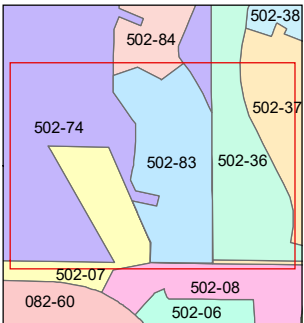
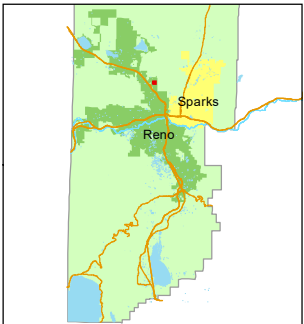
Assessor's Map Number

**502-83**

STATE OF NEVADA  
**WASHOE COUNTY**  
**ASSESSOR'S OFFICE**  
1001 East Ninth Street, Building D  
Reno, Nevada 89512  
(775) 328-2231



1 inch = 80 feet



created by: JKF 9/25/2024

updated: \_\_\_\_\_

area previously shown on map(s):

502-74

NOTE: This map was prepared for the use of the Washoe County Assessor for assessment and illustrative purposes only. It does not represent a survey of the premises. No liability is assumed as to the sufficiency or accuracy of the data delineated hereon.