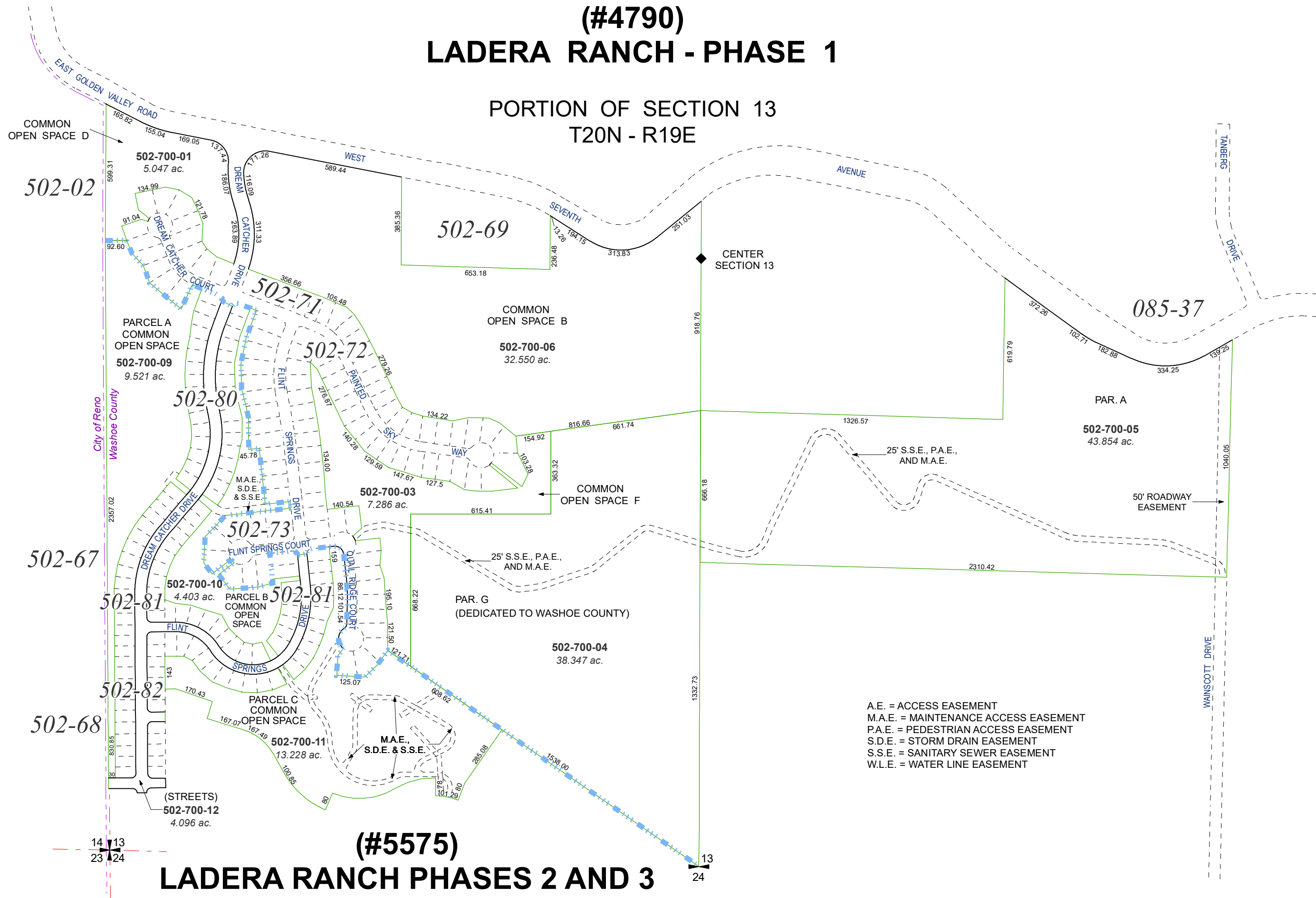


(#4790)
LADERA RANCH - PHASE 1

PORTION OF SECTION 13
T20N - R19E



(#5575)
LADERA RANCH PHASES 2 AND 3

Assessor's Map Number

502-70

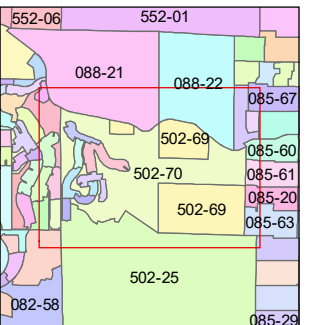
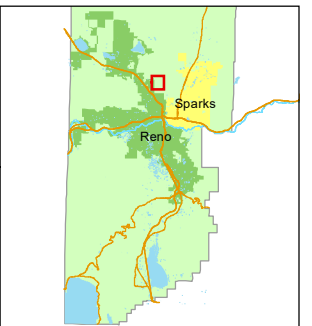
STATE OF NEVADA
WASHOE COUNTY
ASSESSOR'S OFFICE

1001 East Ninth Street, Building D
Reno, Nevada 89512
(775) 328-2231



Feet
0 100 200 300 400

1 inch = 400 feet



created by: SR 07/19/2016

updated: SR 05/07/18 SR 02/02/22

JRA 09/03/24

area previously shown on map(s):

082-47, 502-25

NOTE: This map was prepared for the use of the Washoe County Assessor for assessment and illustrative purposes only. It does not represent a survey of the premises. No liability is assumed as to the sufficiency or accuracy of the data delineated hereon.