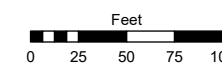
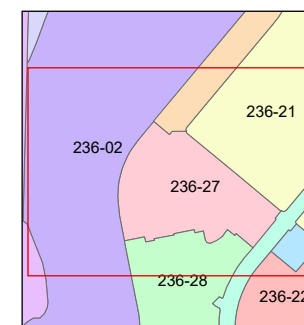
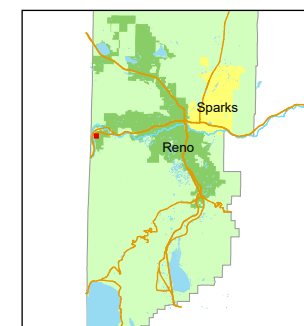


STATE OF NEVADA  
**WASHOE COUNTY**  
**ASSESSOR'S OFFICE**

1001 East Ninth Street, Building D  
Reno, Nevada 89512  
(775) 328-2231



1 inch = 100 feet



created by: MJS 06/16/2026

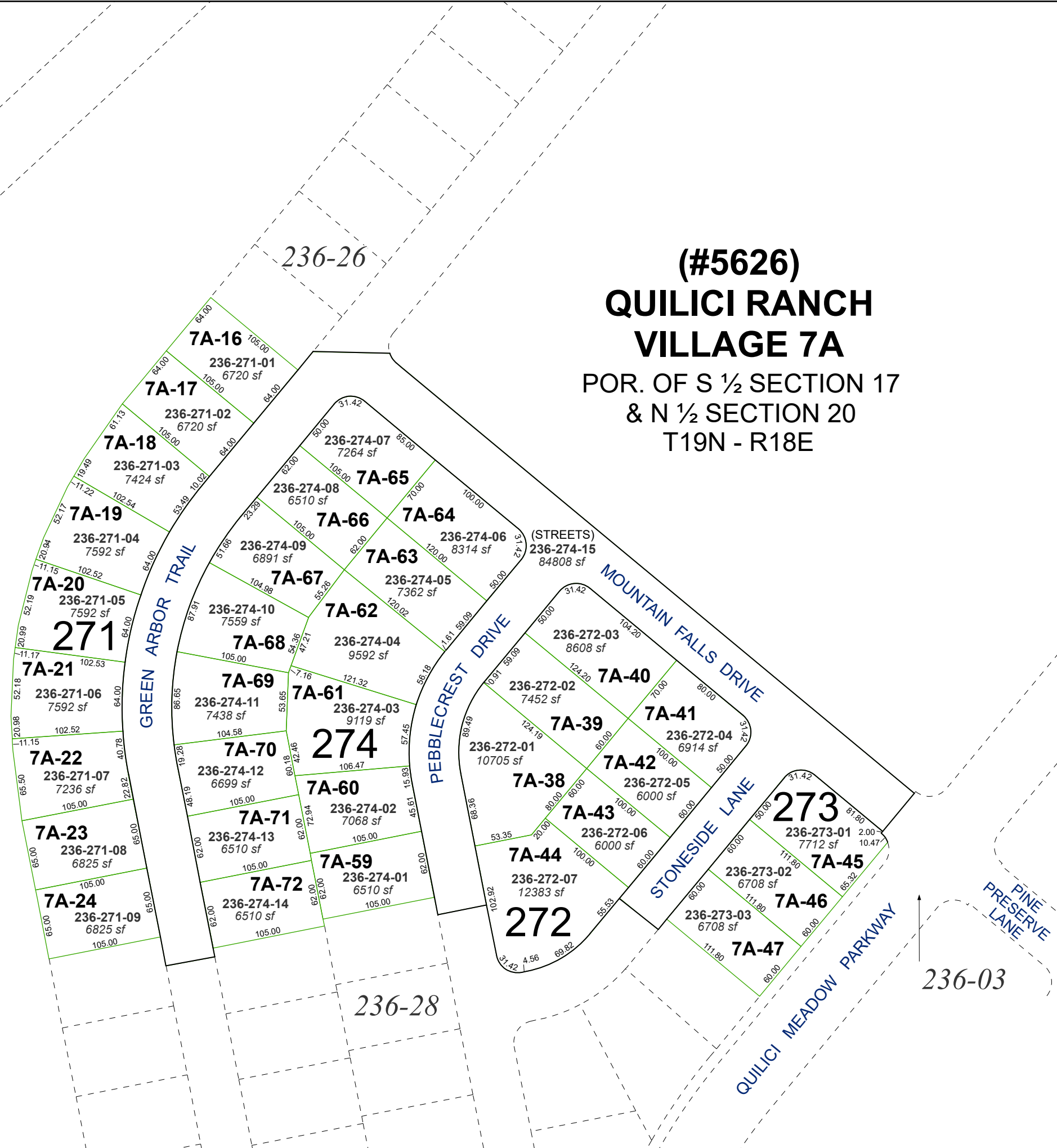
updated: \_\_\_\_\_

area previously shown on map(s):

236-21

NOTE: This map was prepared for the use of the Washoe County Assessor for assessment and illustrative purposes only. It does not represent a survey of the premises. No liability is assumed as to the sufficiency or accuracy of the data delineated herein.

**(#5626)**  
**QUILICI RANCH**  
**VILLAGE 7A**  
POR. OF S 1/2 SECTION 17  
& N 1/2 SECTION 20  
T19N - R18E



Utility & Access Easement

236-26

236-28

236-03

PINE PRESERVE LANE

QUILICI MEADOW PARKWAY

STONESIDE LANE

PEBBLECREST DRIVE

MOUNTAIN FALLS DRIVE

GREEN ARBOR TRAIL

(STREETS)  
236-274-15  
84808 sf

**271**

**274**

**272**

**273**

**7A-16**

**7A-17**

**7A-18**

**7A-19**

**7A-20**

**7A-21**

**7A-22**

**7A-23**

**7A-24**

**7A-65**

**7A-66**

**7A-67**

**7A-68**

**7A-69**

**7A-70**

**7A-71**

**7A-72**

**7A-64**

**7A-63**

**7A-62**

**7A-61**

**7A-60**

**7A-59**

**7A-58**

**236-274-06**

**236-274-05**

**236-272-03**

**236-272-02**

**236-272-01**

**7A-38**

**7A-44**

**7A-40**

**7A-39**

**7A-42**

**7A-43**

**7A-47**

**236-272-04**

**236-272-05**

**236-272-06**

**236-273-02**

**236-273-03**

**236-273-01**

**7A-45**

**7A-46**

**236-271-01**

**236-271-02**

**236-271-03**

**236-271-04**

**236-271-05**

**236-271-06**

**236-271-07**

**236-271-08**

**236-271-09**

**236-274-07**

**236-274-08**

**236-274-09**

**236-274-10**

**236-274-11**

**236-274-12**

**236-274-13**

**236-274-14**

**236-274-08**

**236-274-09**

**236-274-10**

**236-274-11**

**236-274-12**

**236-274-13**

**236-274-14**

**236-274-08**

**236-274-09**

**236-274-10**

**236-274-11**

**236-274-12**

**236-274-13**

**236-274-14**

**236-274-07**

**236-274-08**

**236-274-09**

**236-274-10**

**236-274-11**

**236-274-12**

**236-274-13**

**236-274-14**

**236-271-01**

**236-271-02**

**236-271-03**

**236-271-04**

**236-271-05**

**236-271-06**

**236-271-07**

**236-271-08**

**236-271-09**

**236-274-07**

**236-274-08**

**236-274-09**

**236-274-10**

**236-274-11**

**236-274-12**

**236-274-13**

**236-274-14**

**236-271-01**

**236-271-02**

**236-271-03**

**236-271-04**

**236-271-05**

**236-271-06**

**236-271-07**

**236-271-08**

**236-271-09**

**236-271-01**

**236-271-02**

**236-271-03**

**236-271-04**

**236-271-05**

**236-271-06**

**236-271-07**

**236-271-08**

**236-271-09**

**236-274-07**

**236-274-08**

**236-274-09**

**236-274-10**

**236-274-11**

**236-274-12**

**236-274-13**

**236-274-14**

**236-271-01**

**236-271-02**

**236-271-03**

**236-271-04**

**236-271-05**

**236-271-06**

**236-271-07**

**236-271-08**

**236-271-09**

**236-271-01**

**236-271-02**

**236-271-03**

**236-271-04**

**236-271-05**

**236-271-06**

**236-271-07**

**236-271-08**

**236-271-09**

**236-274-07**

**236-274-08**

**236-274-09**

**236-274-10**

**236-274-11**

**236-274-12**

**236-274-13**

**236-274-14**

**236-271-01**

**236-271-02**

**236-271-03**

**236-271-04**

**236-271-05**

**236-271-06**

**236-271-07**

**236-271-08**

**236-271-09**

**236-271-01**

**236-271-02**

**236-271-03**

**236-271-04**

**236-271-05**

**236-271-06**

**236-271-07**

**236-271-08**

**236-271-09**

**236-274-07**

**236-274-08**

**236-274-09**

**236-274-10**

**236-274-11**

**236-274-12**

**236-274-13**

**236-274-14**

**236-271-01**

**236-271-02**

**236-271-03**

**236-271-04**

**236-271-05**

**236-271-06**

**236-271-07**

**236-271-08**

**236-271-09**

**236-271-01**

**236-271-02**

**236-271-03**

**236-271-04**

**236-271-05**

**236-271-06**

**236-271-07**

**236-271-08**

**236-271-09**

**236-274-07**

**236-274-08**

**236-274-09**

**236-274-10**

**236-274-11**

**236-274-12**

**236-274-13**

**236-274-14**

**236-271-01**

**236-271-02**

**236-271-03**

**236-271-04**

**236-271-05**

**236-271-06**

**236-271-07**

**236-271-08**

**236-271-09**

**236-271-01**

**236-271-02**

**236-271-03**

**236-271-04**

**236-271-05**

**236-271-06**

**236-271-07**

**236-271-08**

**236-271-09**

**236-274-07**

**236-274-08**

**236-274-09**

**236-274-10**

**236-274-11**

**236-274-12**