

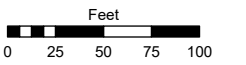
INTERSTATE 80

Assessor's Map Number

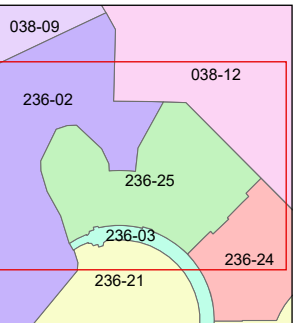
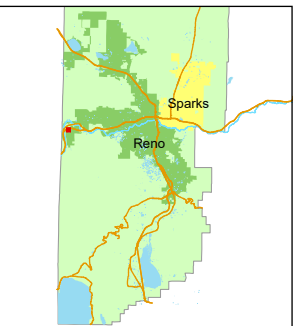
**236-25**

STATE OF NEVADA  
**WASHOE COUNTY**  
ASSESSOR'S OFFICE

1001 East Ninth Street, Building D  
Reno, Nevada 89512  
(775) 328-2231



1 inch = 100 feet



created by: MJS 05/28/2026

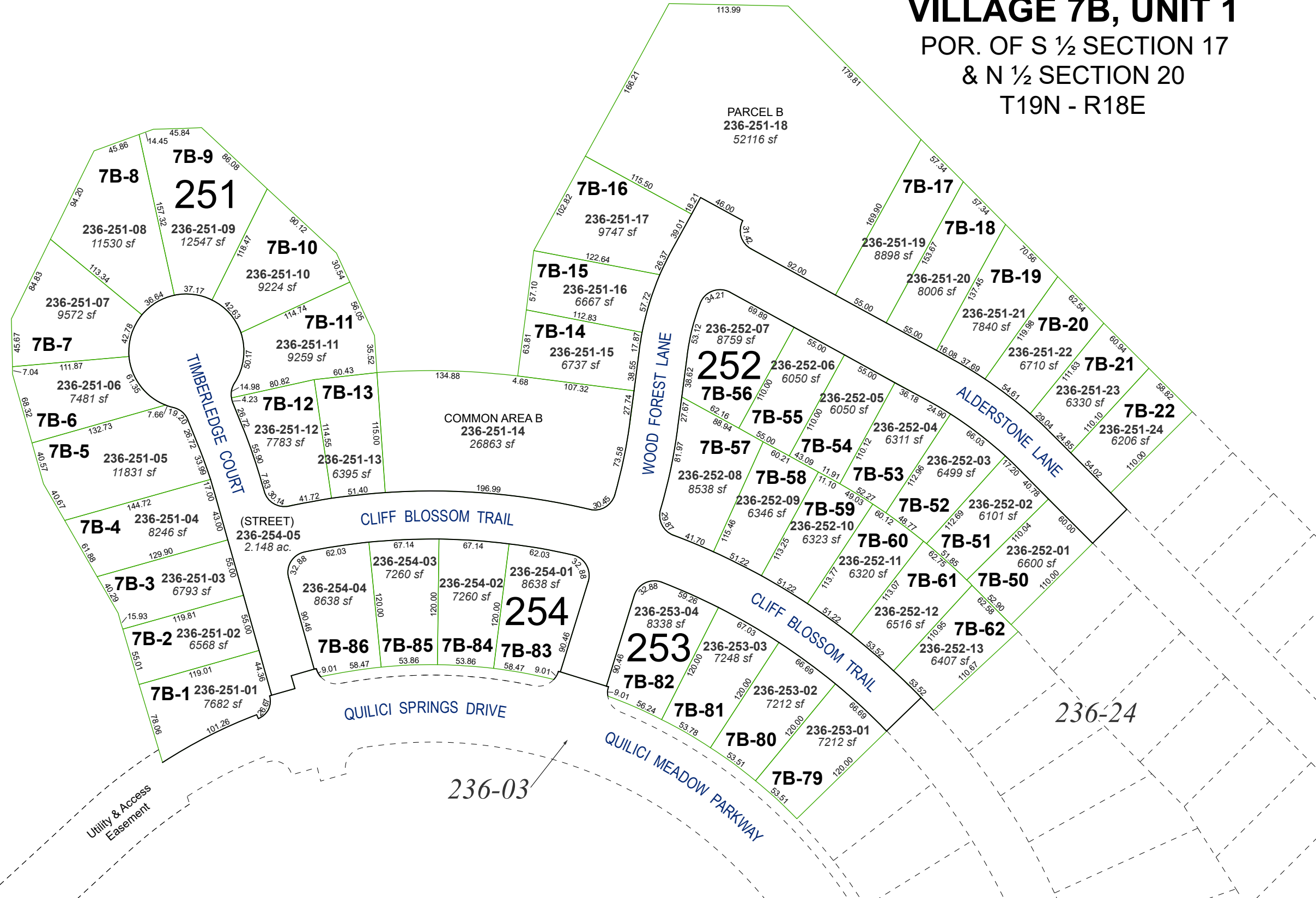
updated: \_\_\_\_\_

area previously shown on map(s):

236-21

NOTE: This map was prepared for the use of the Washoe County Assessor for assessment and illustrative purposes only. It does not represent a survey of the premises. No liability is assumed as to the sufficiency or accuracy of the data delineated herein.

**(#5625)**  
**QUILICI RANCH**  
**VILLAGE 7B, UNIT 1**  
POR. OF S 1/2 SECTION 17  
& N 1/2 SECTION 20  
T19N - R18E



Utility & Access Easement

236-03

236-24