

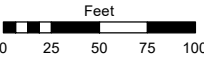
**(#5582)
QUILICI RANCH
VILLAGE 7C, UNIT 1**

**POR. OF S ½ SECTION 17
& N ½ SECTION 20
T19N - R18E**

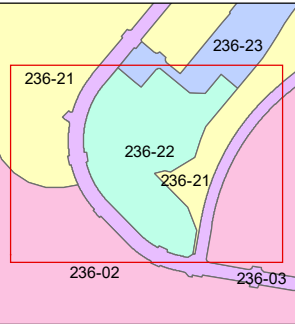
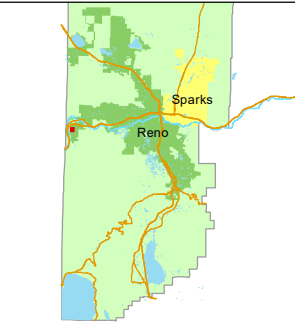
Assessor's Map Number

236-22

STATE OF NEVADA
WASHOE COUNTY
ASSESSOR'S OFFICE
1001 East Ninth Street, Building D
Reno, Nevada 89512
(775) 328-2231



1 inch = 100 feet



created by: KSB 11/07/2024

updated: _____

area previously shown on map(s):

236-02

NOTE: This map was prepared for the use of the Washoe County Assessor for assessment and illustrative purposes only. It does not represent a survey of the premises. No liability is assumed as to the sufficiency or accuracy of the data delineated hereon.