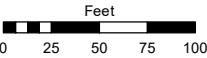
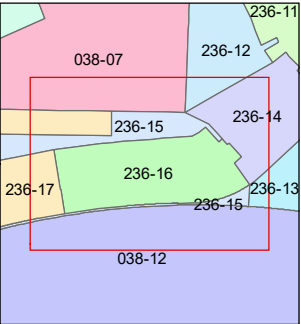
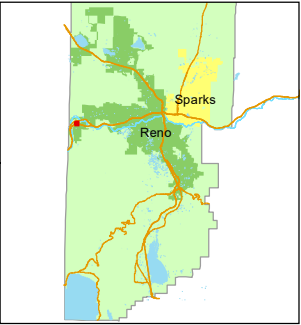


STATE OF NEVADA
WASHOE COUNTY
ASSESSOR'S OFFICE

1001 East Ninth Street, Building D
Reno, Nevada 89512
(775) 328-2231



1 inch = 100 feet



created by: SR 05/10/2021

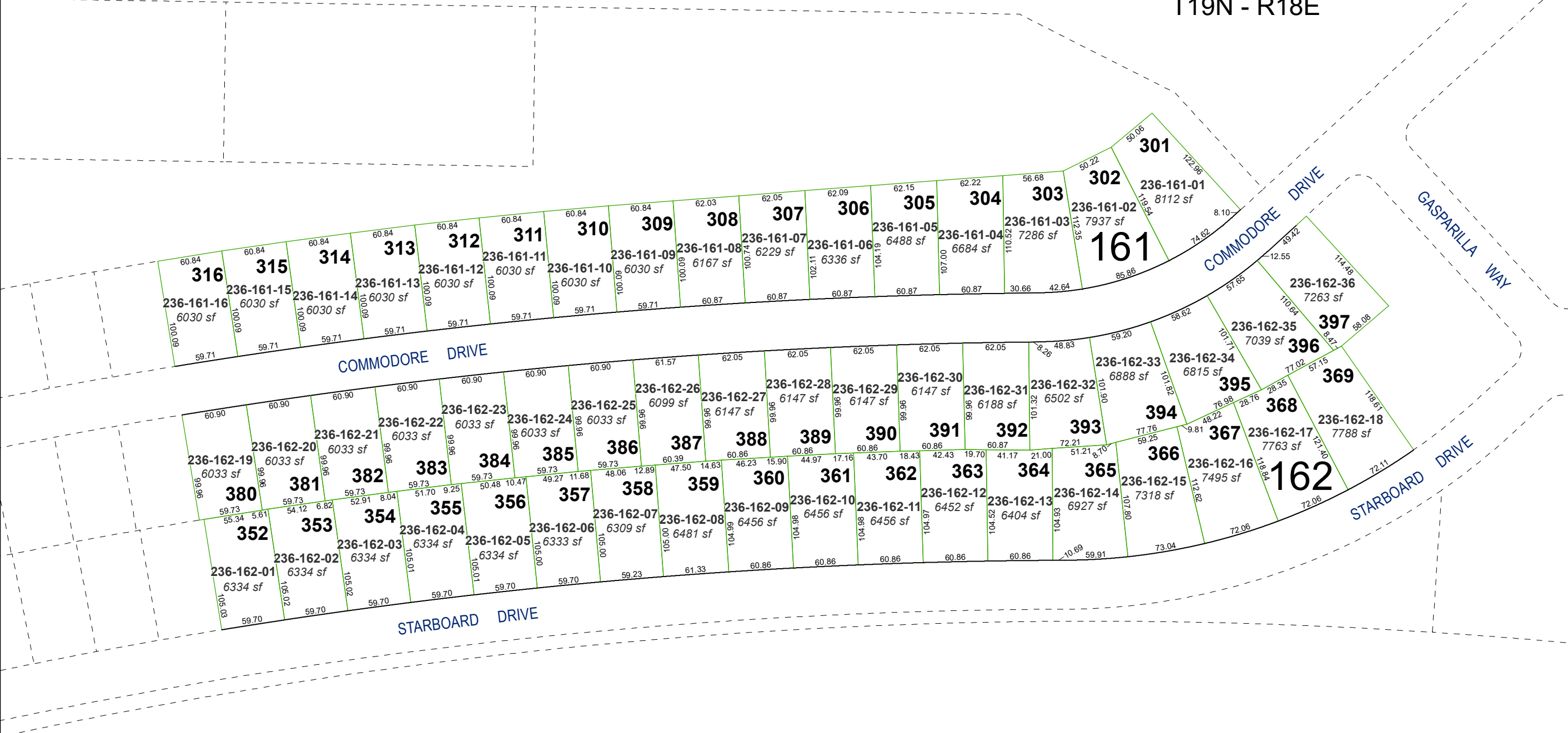
updated: _____

area previously shown on map(s):

236-15

NOTE: This map was prepared for the use of the Washoe County Assessor for assessment and illustrative purposes only. It does not represent a survey of the premises. No liability is assumed as to the sufficiency or accuracy of the data delineated hereon.

(#5420)
MERIDIAN 120 NORTH
VILLAGE 3
PORTION OF N½ SECTION 17
T19N - R18E



INTERSTATE 80