

PORTION OF SE¼ SECTION 36  
T19N - R19E



Assessor's Map Number

**226-13**

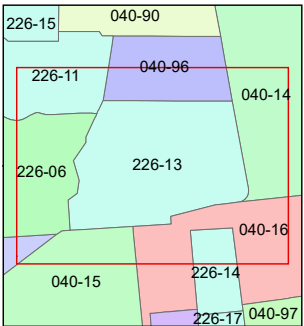
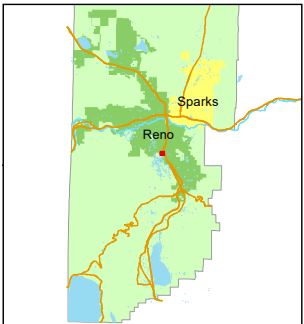
STATE OF NEVADA  
**WASHOE COUNTY**  
**ASSESSOR'S OFFICE**

1001 East Ninth Street, Building D  
Reno, Nevada 89512  
(775) 328-2231



Feet  
0 25 50 75 100

1 inch = 100 feet



created by: SR 12/23/2020

updated: SR 1/6/21 JKF 3/7/25

JKF 3/10/25 JKF 3/11/25

area previously shown on map(s):

040-90

NOTE: This map was prepared for the use of the Washoe County Assessor for assessment and illustrative purposes only. It does not represent a survey of the premises. No liability is assumed as to the sufficiency or accuracy of the data delineated hereon.