

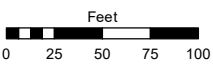
(#5217)  
**RANCHARRAH  
VILLAGES 1, 2 & 3**  
A PLANNED UNIT DEVELOPMENT  
  
PORTION OF SECTION 36  
T19N - R19E

Assessor's Map Number

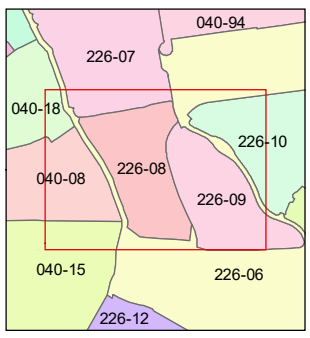
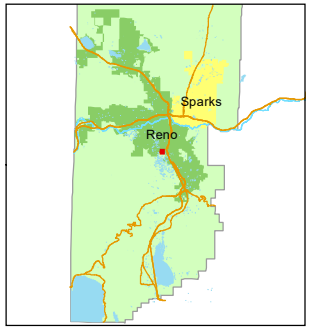
**226-08**

STATE OF NEVADA  
**WASHOE COUNTY**  
**ASSESSOR'S OFFICE**

1001 East Ninth Street, Building D  
Reno, Nevada 89512  
(775) 328-2231



1 inch = 100 feet



created by: SR 08/08/2017

updated: SR 10/29/19

area previously shown on map(s):

040-90

NOTE: This map was prepared for the use of the Washoe County Assessor for assessment and illustrative purposes only. It does not represent a survey of the premises. No liability is assumed as to the sufficiency or accuracy of the data delineated hereon.