

Assessor's Map Number

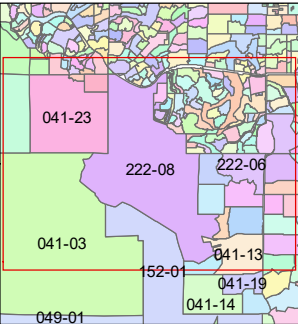
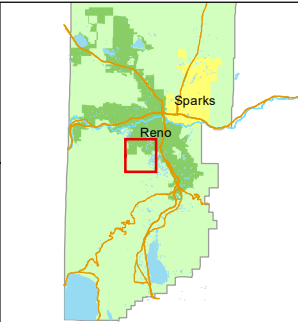
222-08

STATE OF NEVADA
WASHOE COUNTY
ASSESSOR'S OFFICE
1001 East Ninth Street, Building D
Reno, Nevada 89512
(775) 328-2231



Feet
0 330 660 990 1,320

1 inch = 1,320 feet



created by: KSB 5/10/2012

updated: JRA 9/22/21

area previously shown on map(s):

041-04

NOTE: This map was prepared for the use of the Washoe County Assessor for assessment and illustrative purposes only. It does not represent a survey of the premises. No liability is assumed as to the sufficiency or accuracy of the data delineated hereon.