

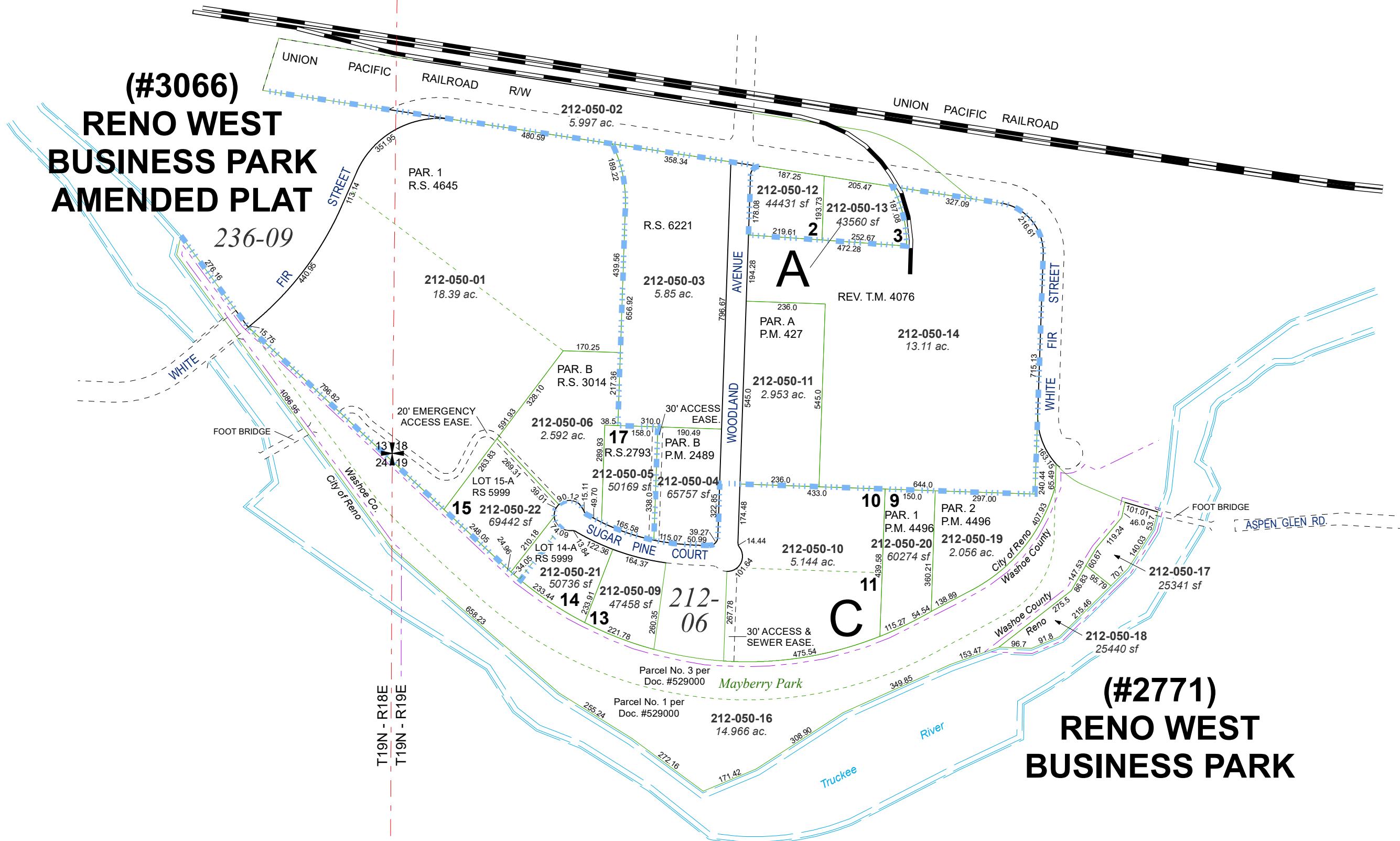
PORTIONS OF SECTIONS 13 & 24
T19N - R18E

PORTIONS OF SECTIONS 18 & 19
T19N - R19E

**(#3066)
RENO WEST
BUSINESS PARK
AMENDED PLAT**

236-09

**(#2771)
RENO WEST
BUSINESS PARK**



Assessor's Map Number

212-05

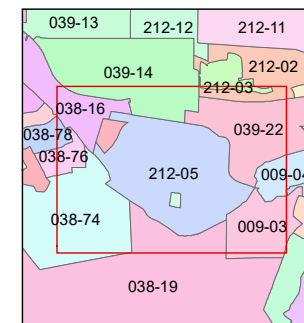
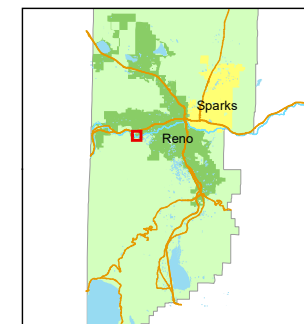
STATE OF NEVADA
**WASHOE COUNTY
ASSESSOR'S OFFICE**

1001 East Ninth Street, Building D
Reno, Nevada 89512
(775) 328-2231



Feet
0 75 150 225 300

1 inch = 300 feet



created by: NLH 11/17/2011

updated: CFB 10/11/13 JMO 10/24/18

JKF 8/26/24

area previously shown on map(s):

039-24

NOTE: This map was prepared for the use of the Washoe County Assessor for assessment and illustrative purposes only. It does not represent a survey of the premises. No liability is assumed as to the sufficiency or accuracy of the data delineated hereon.