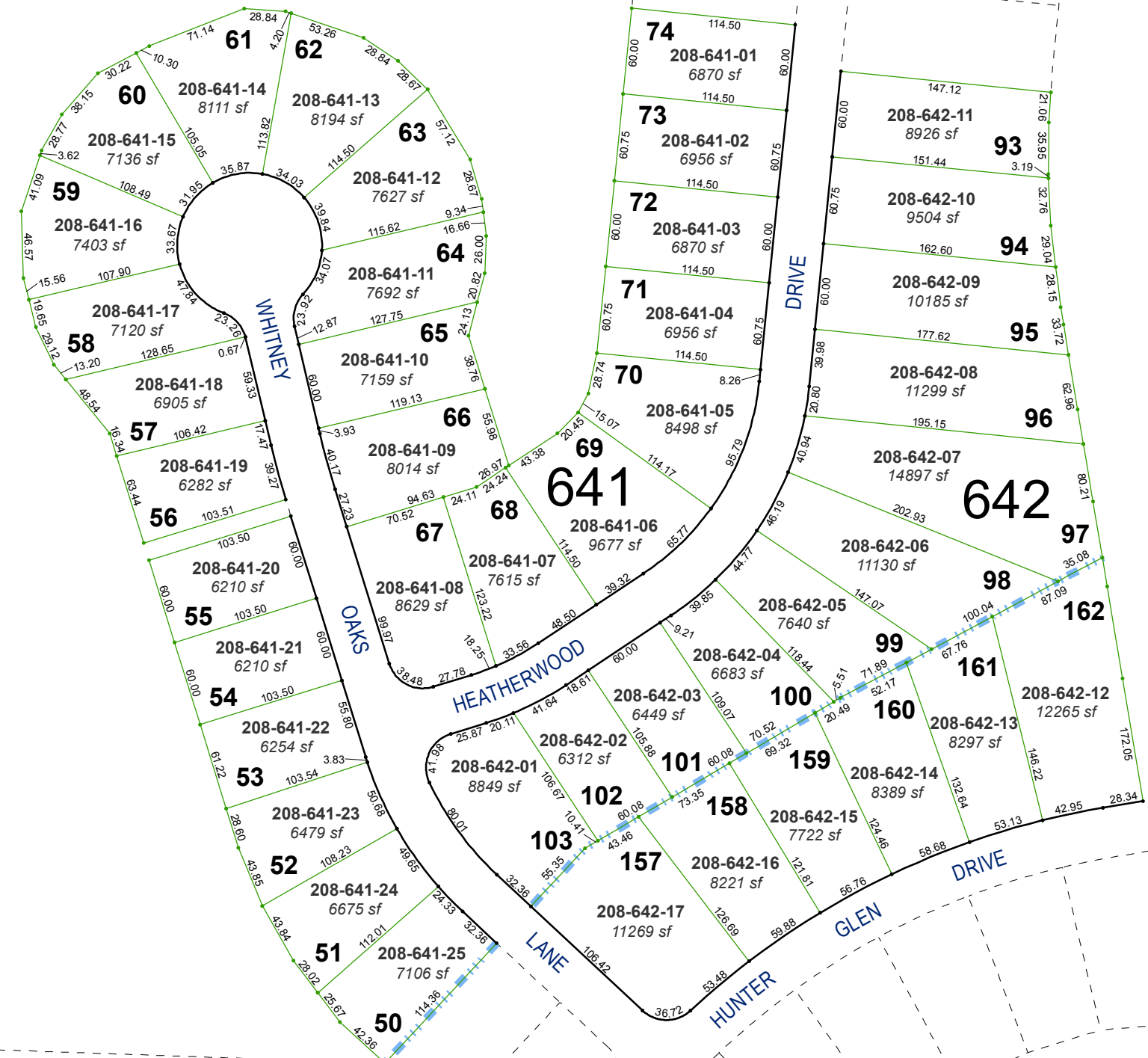


(#4196)
NORTHGATE UNIT NO. 12B
PORTION OF SECTION 1
T19N - R18E



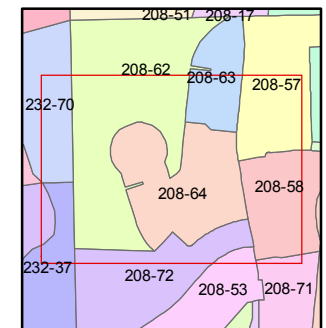
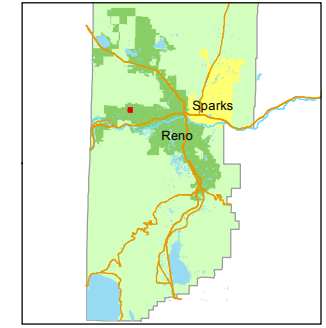
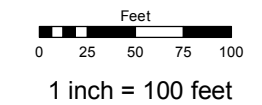
(#4500)
**NORTHGATE
UNIT NO. 12D**

Assessor's Map Number

208-64

STATE OF NEVADA
WASHOE COUNTY
ASSESSOR'S OFFICE
Michael E. Clark, Assessor

1001 East Ninth Street
Building D
Reno, Nevada 89512
(775) 328-2231



created by: JMO 07/11/2016

last updated: _____

area previously shown on map(s)
208-28

NOTE: This map was prepared for the use of the Washoe County Assessor for assessment and illustrative purposes only. It does not represent a survey of the premises. No liability is assumed as to the sufficiency or accuracy of the data delineated hereon.