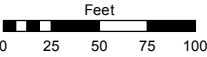
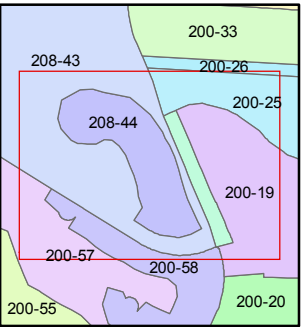
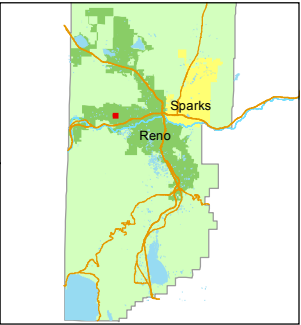


STATE OF NEVADA
WASHOE COUNTY
ASSESSOR'S OFFICE
Michael E. Clark, Assessor

1001 East Ninth Street
Building D
Reno, Nevada 89512
(775) 328-2231



1 inch = 100 feet



created by: JMO 06/28/2016

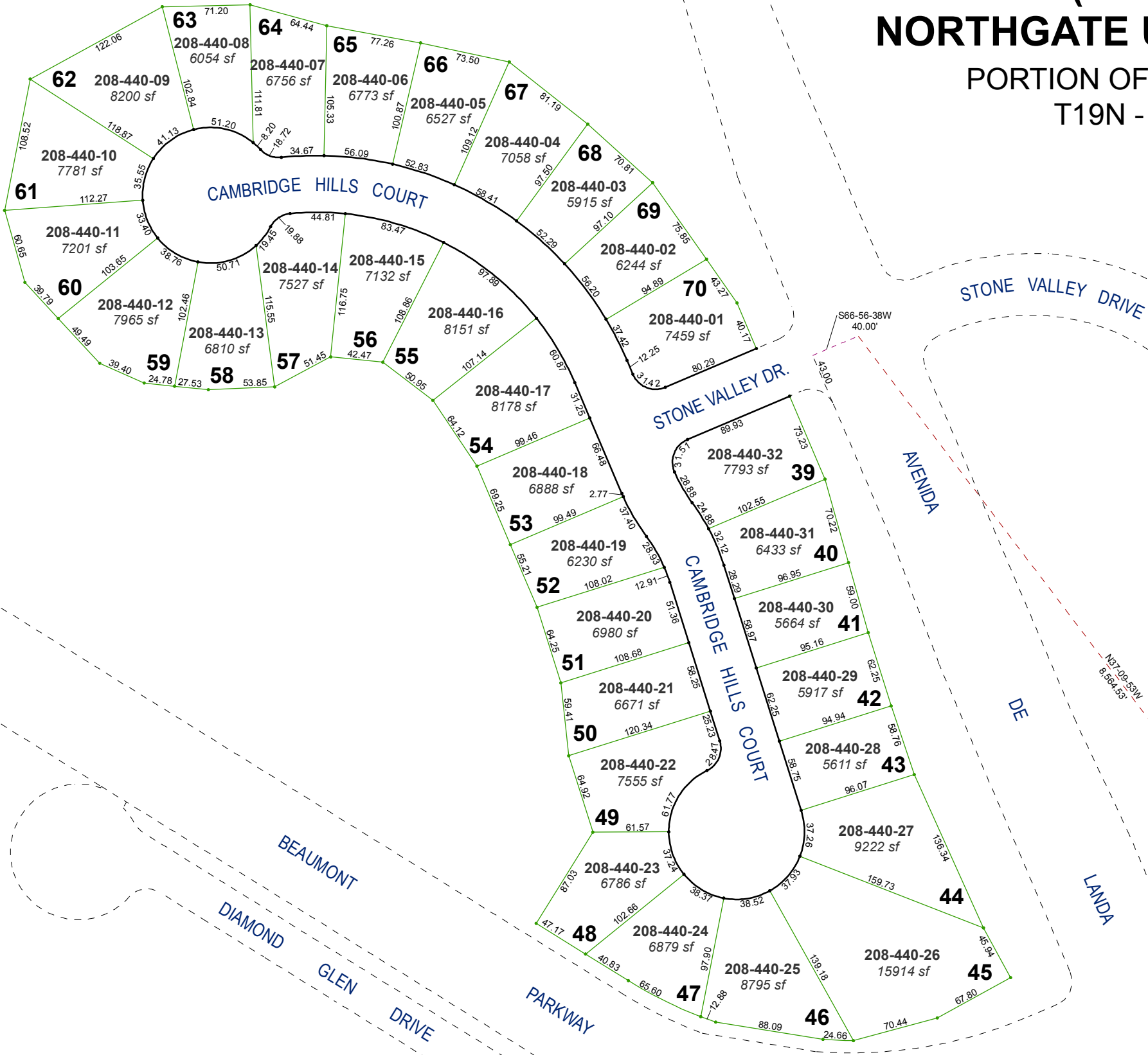
last updated: _____

area previously shown on map(s)

208-32

NOTE: This map was prepared for the use of the Washoe County Assessor for assessment and illustrative purposes only. It does not represent a survey of the premises. No liability is assumed as to the sufficiency or accuracy of the data delineated hereon.

(#3927)
NORTHGATE UNIT NO. 18B
PORTION OF SECTION 7
T19N - R19E



NGS STATION
"CHALK BLUFF"
N 14,862,838.955
E 2,260,459.842