

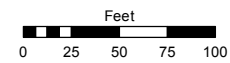
(#3815)
NORTHGATE UNIT 17B
PORTION OF SECTION 6
T19N - R19E

Assessor's Map Number

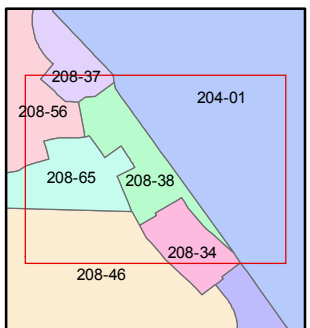
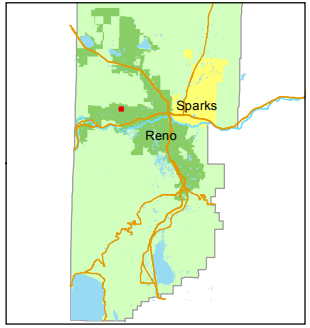
208-38

STATE OF NEVADA
WASHOE COUNTY
ASSESSOR'S OFFICE
Michael E. Clark, Assessor

1001 East Ninth Street
Building D
Reno, Nevada 89512
(775) 328-2231



1 inch = 100 feet



created by: JMO 06/22/2016

last updated: _____

area previously shown on map(s)
208-32

NOTE: This map was prepared for the use of the Washoe County Assessor for assessment and illustrative purposes only. It does not represent a survey of the premises. No liability is assumed as to the sufficiency or accuracy of the data delineated hereon.