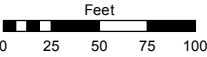
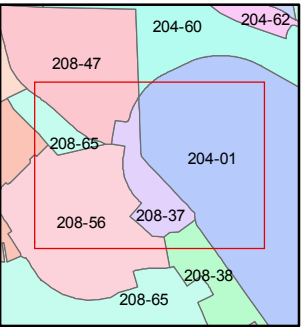
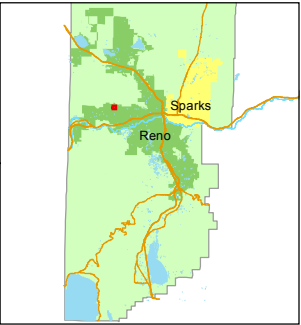


STATE OF NEVADA  
**WASHOE COUNTY**  
**ASSESSOR'S OFFICE**  
Michael E. Clark, Assessor

1001 East Ninth Street  
Building D  
Reno, Nevada 89512  
(775) 328-2231



1 inch = 100 feet



created by: JMO 06/21/2016

last updated: \_\_\_\_\_

area previously shown on map(s)

208-32

NOTE: This map was prepared for the use of the Washoe County Assessor for assessment and illustrative purposes only. It does not represent a survey of the premises. No liability is assumed as to the sufficiency or accuracy of the data delineated hereon.

**(#3815)**  
**NORTHGATE UNIT 17B**  
PORTION OF SECTION 6  
T19N - R19E

**371**  
208-371-01  
9338 sf  
**54**

PARCEL C

208-373-07  
8903 sf

208-373-06  
12584 sf  
**28**

**29**

208-373-05  
12518 sf

**30**

208-373-04  
12438 sf

**31**  
**373**

208-373-03  
12329 sf

**32**

208-373-02  
9870 sf

**33**

208-373-01  
10965 sf

**34**

208-373-09  
9467 sf

208-372-01  
7108 sf  
**53**

208-372-02  
8010 sf  
**52**

**372**

208-372-03  
11374 sf  
**51**