

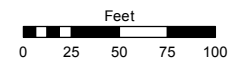
(#3549)
NORTHGATE UNIT NO. 16B
 A PORTION OF SECTION 12
 T19N - R18E

Assessor's Map Number

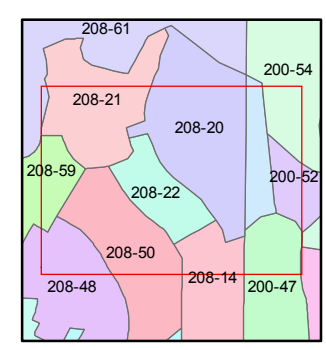
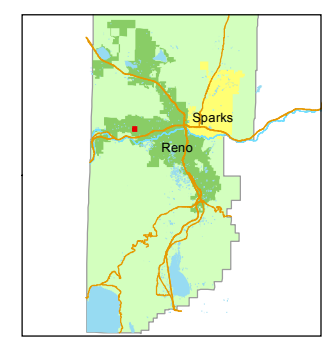
208-22

STATE OF NEVADA
WASHOE COUNTY
ASSESSOR'S OFFICE
 Michael E. Clark, Assessor

1001 East Ninth Street
 Building D
 Reno, Nevada 89512
 (775) 328-2231



1 inch = 100 feet



created by: JMO 06/14/2016

last updated: _____

area previously shown on map(s)
208-13

NOTE: This map was prepared for the use of the Washoe County Assessor for assessment and illustrative purposes only. It does not represent a survey of the premises. No liability is assumed as to the sufficiency or accuracy of the data delineated hereon.