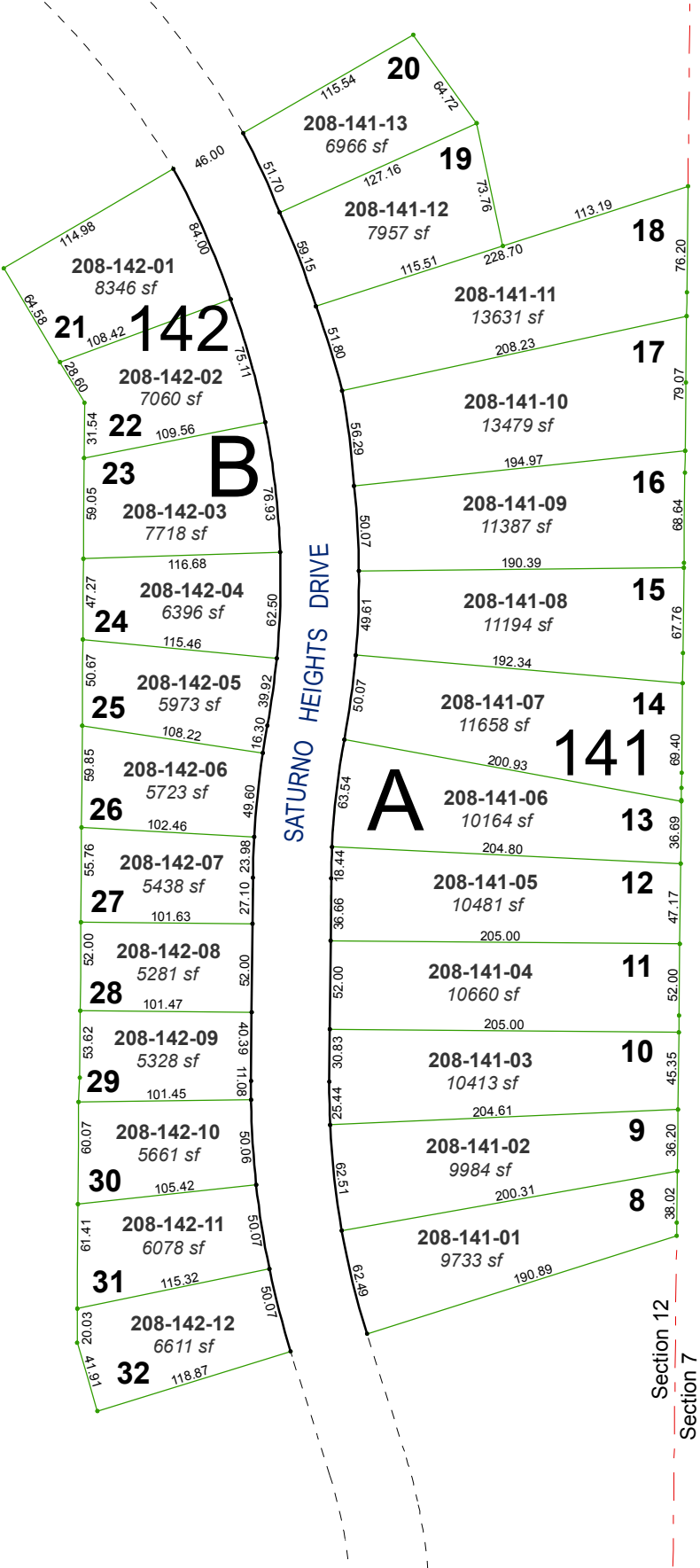


NORTHGATE UNIT NO. 16A (#3406)

PORTION OF E½ SECTION 12

T19N - R18E

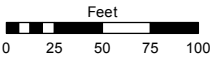


Assessor's Map Number

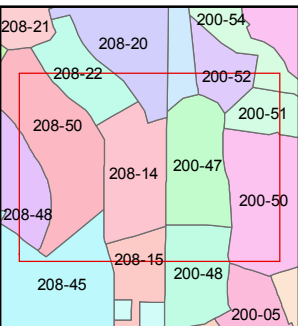
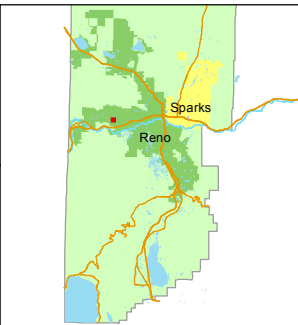
208-14

STATE OF NEVADA  
WASHOE COUNTY  
ASSESSOR'S OFFICE  
Michael E. Clark, Assessor

1001 East Ninth Street  
Building D  
Reno, Nevada 89512  
(775) 328-2231



1 inch = 100 feet



created by: JMO 06/06/2016

last updated:

area previously shown on map(s)

208-13

NOTE: This map was prepared for the use of the Washoe County Assessor for assessment and illustrative purposes only. It does not represent a survey of the premises. No liability is assumed as to the sufficiency or accuracy of the data delineated hereon.