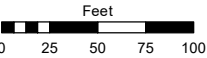
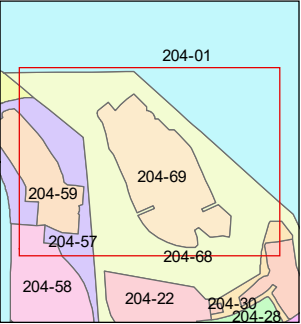
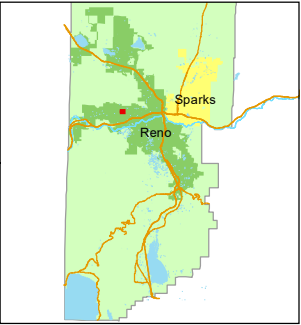


STATE OF NEVADA
WASHOE COUNTY
ASSESSOR'S OFFICE
1001 East Ninth Street, Building D
Reno, Nevada 89512
(775) 328-2231



1 inch = 100 feet



created by: KGC 9/27/2024

updated: _____

area previously shown on map(s):

204-02

NOTE: This map was prepared for the use of the Washoe County Assessor for assessment and illustrative purposes only. It does not represent a survey of the premises. No liability is assumed as to the sufficiency or accuracy of the data delineated hereon.

(#4219) SAPPHIRE RIDGE PHASE 3

POR. SW ¼ SECTION 5
T19N - R19E

BLUE CANYON DRIVE

BLUE RIDGE DRIVE

BLUE CANYON COURT

BLUE RIDGE DRIVE

SEPTEMBER CIRCLE

SEPTEMBER CIRCLE

691

693

692

694

