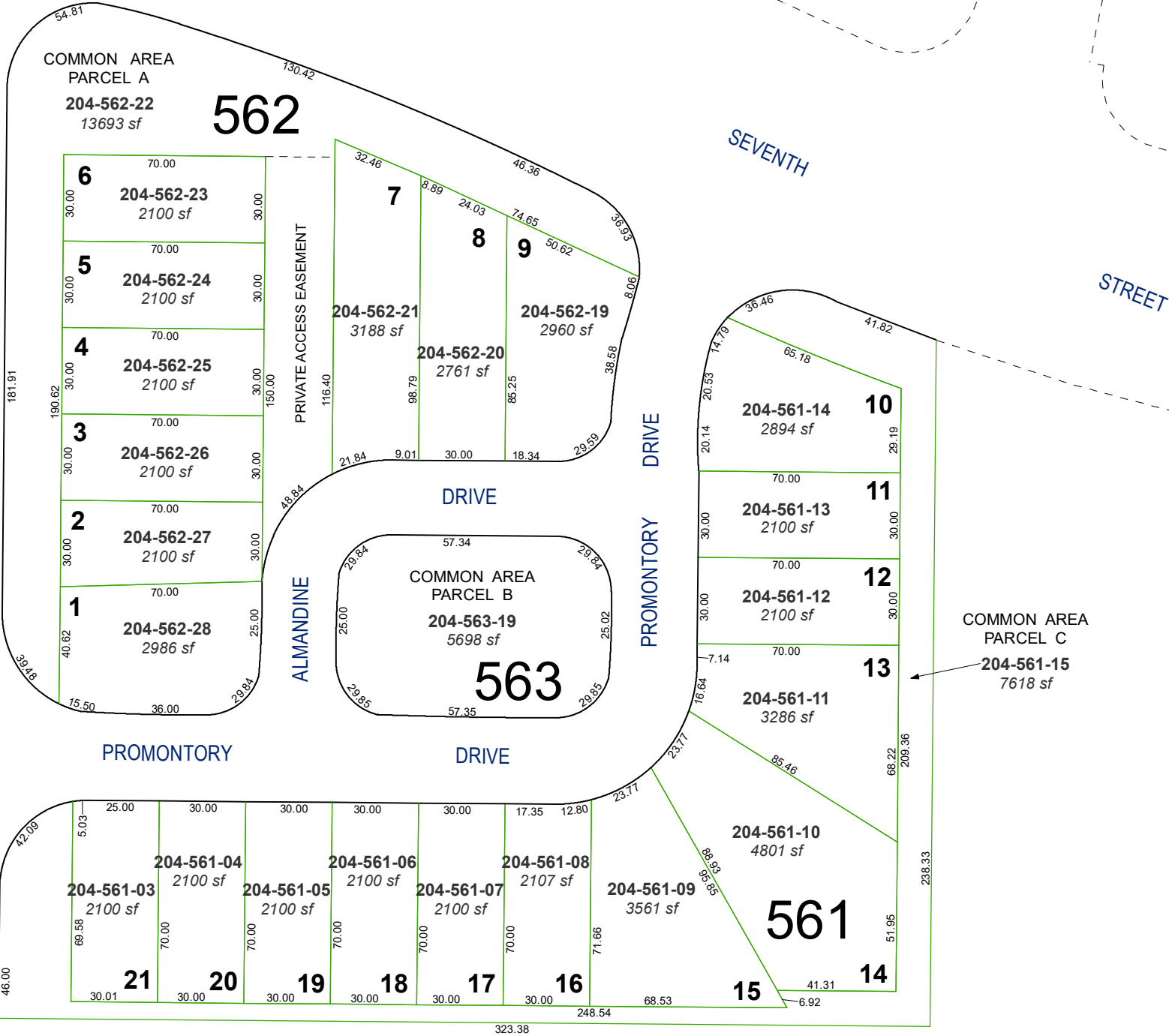


(#4692)
HIGHLAND PLACE

POR. OF SW ¼ OF SECTION 5
T19N - R19E

DRIVE

ROBB

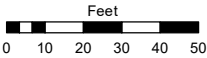


Assessor's Map Number

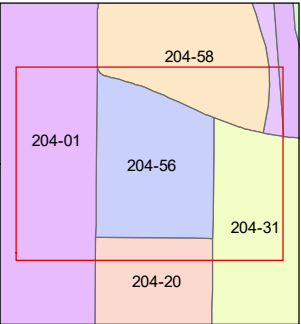
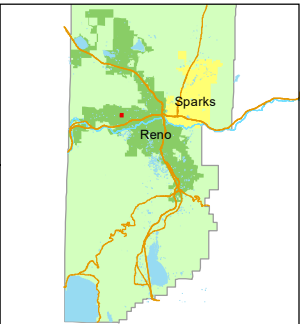
204-56

STATE OF NEVADA
WASHOE COUNTY
ASSESSOR'S OFFICE

1001 East Ninth Street, Building D
Reno, Nevada 89512
(775) 328-2231



1 inch = 50 feet



created by: KGC 9/27/2024

updated:

area previously shown on map(s):

204-20

NOTE: This map was prepared for the use of the Washoe County Assessor for assessment and illustrative purposes only. It does not represent a survey of the premises. No liability is assumed as to the sufficiency or accuracy of the data delineated hereon.