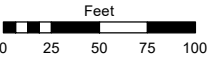
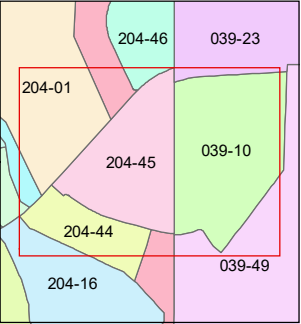
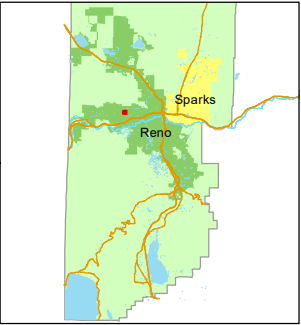


STATE OF NEVADA
WASHOE COUNTY
ASSESSOR'S OFFICE
1001 East Ninth Street, Building D
Reno, Nevada 89512
(775) 328-2231



1 inch = 100 feet



created by: KGC 9/26/2024

updated: _____

area previously shown on map(s):
204-02

NOTE: This map was prepared for the use of the Washoe County Assessor for assessment and illustrative purposes only. It does not represent a survey of the premises. No liability is assumed as to the sufficiency or accuracy of the data delineated hereon.

(#3831)
SILVERADO RANCH ESTATES
UNIT 6 & UNIT 7

A PORTION OF SECTION 5
T19N - R19E

