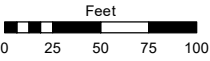
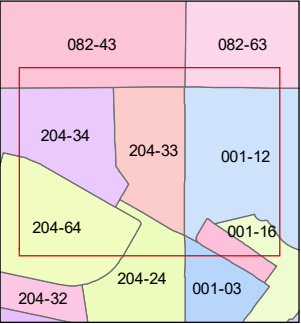
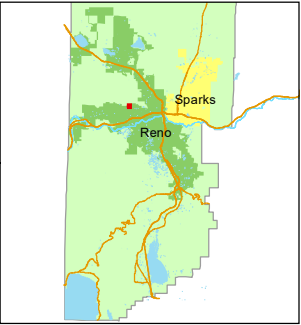


STATE OF NEVADA
WASHOE COUNTY
ASSESSOR'S OFFICE
1001 East Ninth Street, Building D
Reno, Nevada 89512
(775) 328-2231



1 inch = 100 feet



created by: KGC 9/26/2024

updated: _____

area previously shown on map(s):

204-02

NOTE: This map was prepared for the use of the Washoe County Assessor for assessment and illustrative purposes only. It does not represent a survey of the premises. No liability is assumed as to the sufficiency or accuracy of the data delineated hereon.

N89-36-34E 1.72' 32 33
5 4

(#3557)
SILVERADO RANCH ESTATES
UNIT 5 PHASE 2

PORTION OF NE 1/4 SECTION 5
T19N - R19E

15' PRIVATE
DRAINAGE
EASEMENT

REGAL
COURT

DRIVE

REGAL

ROW

ROYAL SAGE DR.

CROWN CANYON COURT

SCEPTER
COURT

KINGS

PARCEL A
(Dedicated to the
City of Reno)

204-330-15
2.005 ac.

208

204-330-08
15846 sf

204-330-07
13432 sf

207

204-330-06
9848 sf

206

204-330-05
8772 sf

205

204-330-04
9262 sf

204

204-330-03
9416 sf

203

204-330-02
10289 sf

202

204-330-01
16583 sf

201

204-330-09
22989 sf

209

204-330-10
15890 sf

210

204-330-11
11521 sf

211

204-330-12
9778 sf

212

204-330-13
9070 sf

213

204-330-14
11446 sf

214