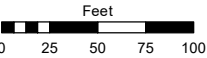
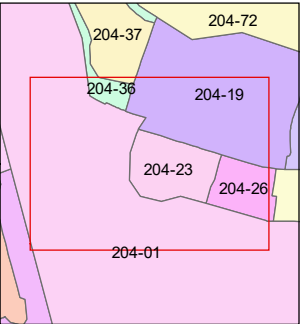
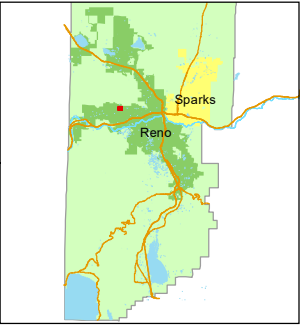


STATE OF NEVADA  
**WASHOE COUNTY**  
**ASSESSOR'S OFFICE**  
1001 East Ninth Street, Building D  
Reno, Nevada 89512  
(775) 328-2231



1 inch = 100 feet



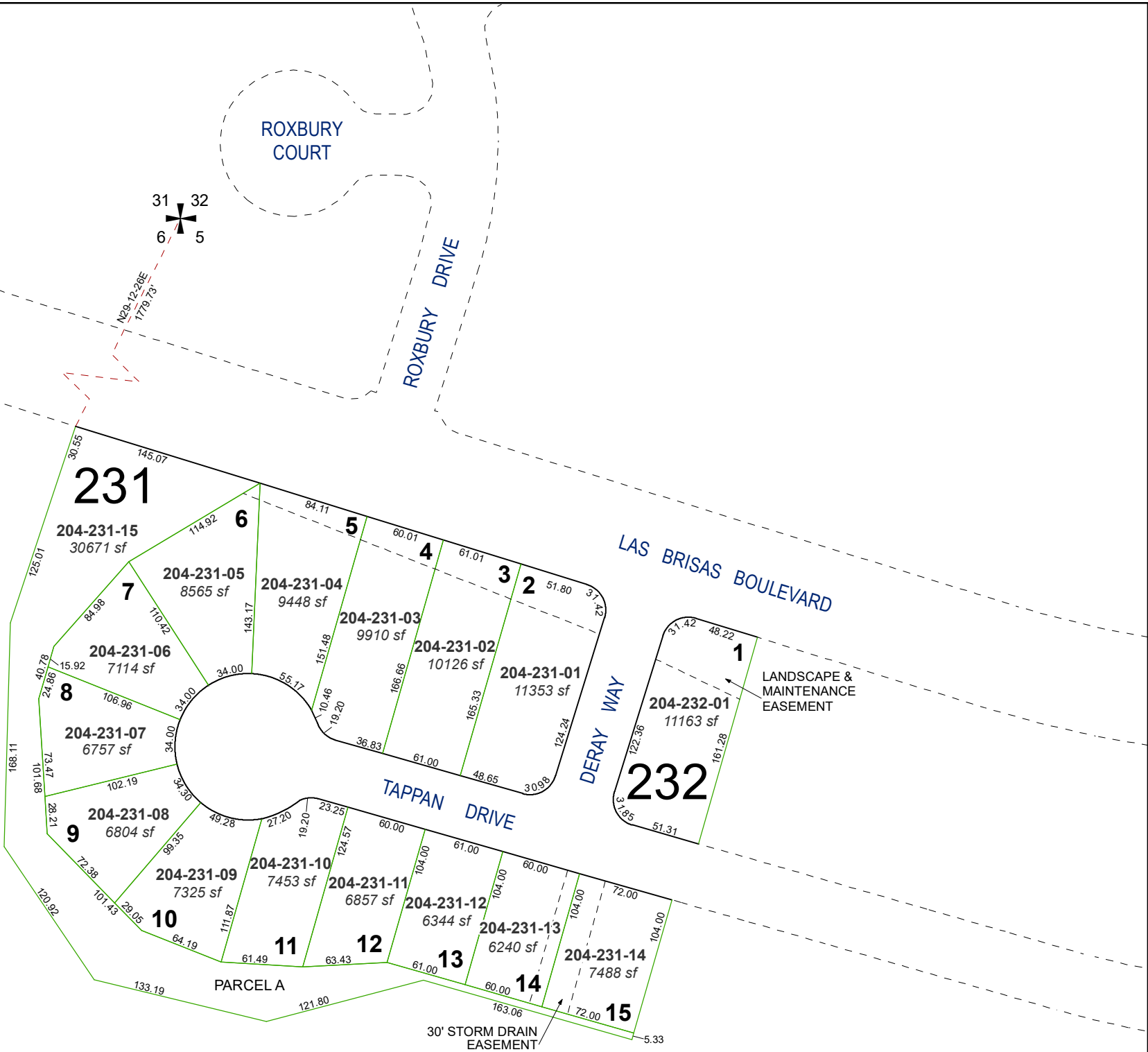
created by: KGC 9/25/2024

updated: \_\_\_\_\_

area previously shown on map(s):

204-01

NOTE: This map was prepared for the use of the Washoe County Assessor for assessment and illustrative purposes only. It does not represent a survey of the premises. No liability is assumed as to the sufficiency or accuracy of the data delineated hereon.



**(#3460)**  
**SILVERADO RANCH ESTATES**  
**UNIT 4B**

PORTION OF NE ¼ SECTION 6  
T19N - R19E