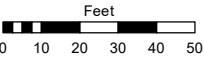
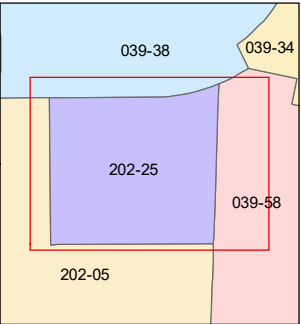
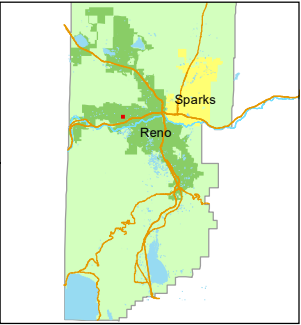


STATE OF NEVADA
WASHOE COUNTY
ASSESSOR'S OFFICE
1001 East Ninth Street, Building D
Reno, Nevada 89512
(775) 328-2231



1 inch = 50 feet



created by: JRA 10/30/2023

updated: _____

area previously shown on map(s):

202-05

NOTE: This map was prepared for the use of the Washoe County Assessor for assessment and illustrative purposes only. It does not represent a survey of the premises. No liability is assumed as to the sufficiency or accuracy of the data delineated hereon.



(#5541)
**GRAND POINT
TOWNHOMES
NORTH**
POR. NW ¼ SEC. 8
T19N - R19E