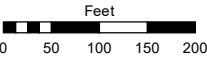
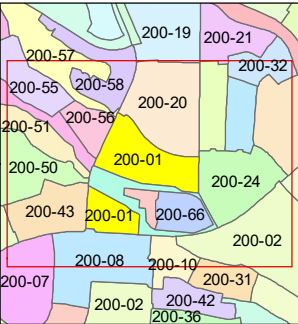
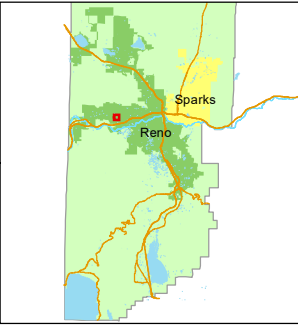


STATE OF NEVADA
WASHOE COUNTY
ASSESSOR'S OFFICE

1001 East Ninth Street, Building D
Reno, Nevada 89512
(775) 328-2231



1 inch = 200 feet



created by: EG 11/21/2013

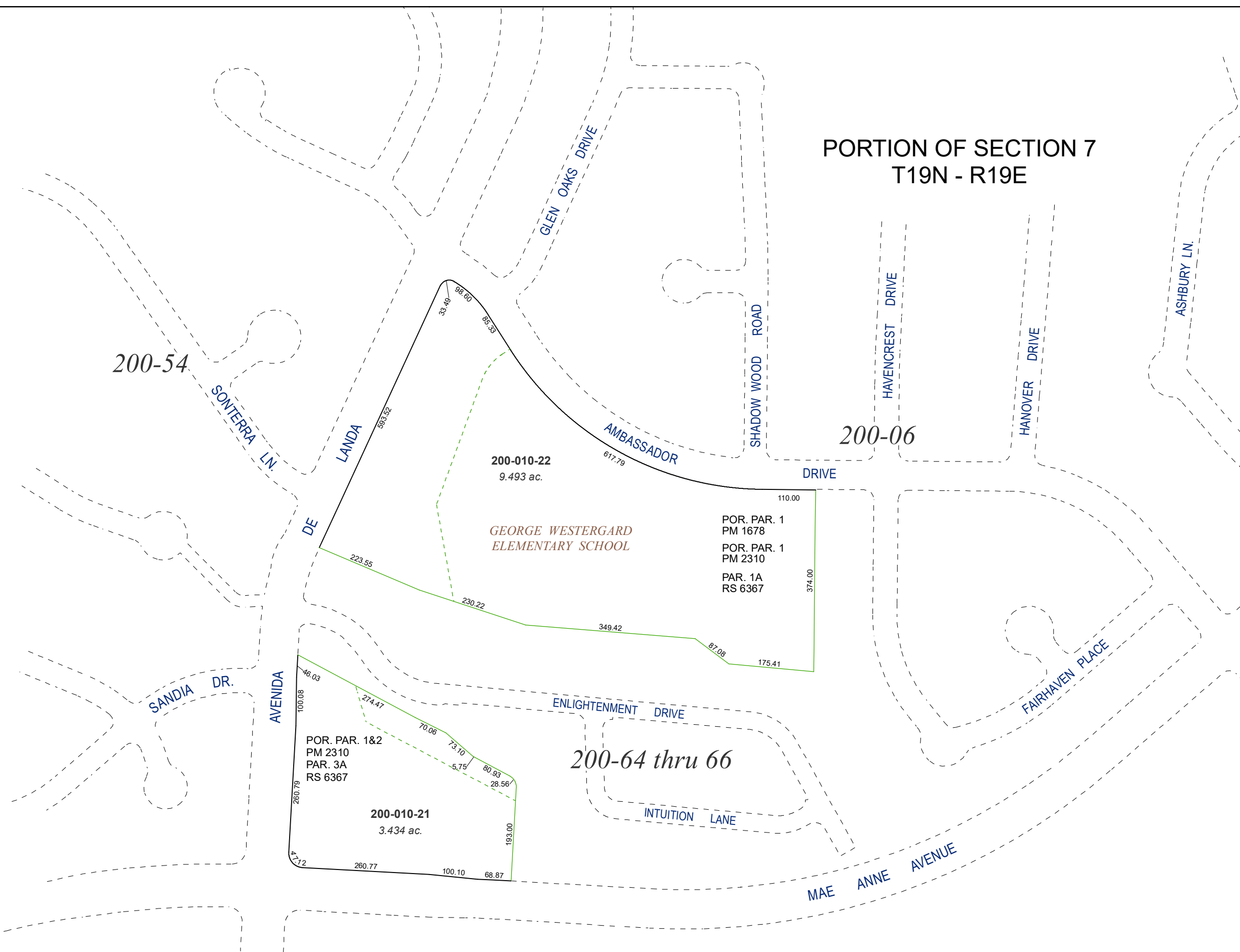
updated: JRA 5/20/22 JRA 9/15/22

area previously shown on map(s):

039-03

NOTE: This map was prepared for the use of the Washoe County Assessor for assessment and illustrative purposes only. It does not represent a survey of the premises. No liability is assumed as to the sufficiency or accuracy of the data delineated hereon.

PORTION OF SECTION 7
T19N - R19E



200-010-22
9.493 ac.

GEORGE WESTERGARD
ELEMENTARY SCHOOL

POR. PAR. 1
PM 1678
POR. PAR. 1
PM 2310
PAR. 1A
RS 6367

POR. PAR. 1&2
PM 2310
PAR. 3A
RS 6367

200-010-21
3.434 ac.

200-64 thru 66