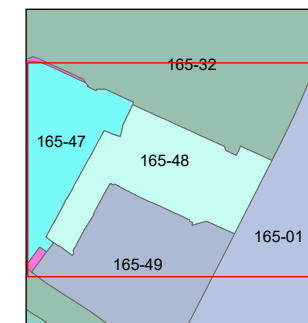
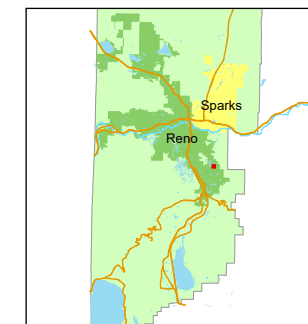


1 inch = 80 feet



created by: JKF 4/3/2026

updated: _____

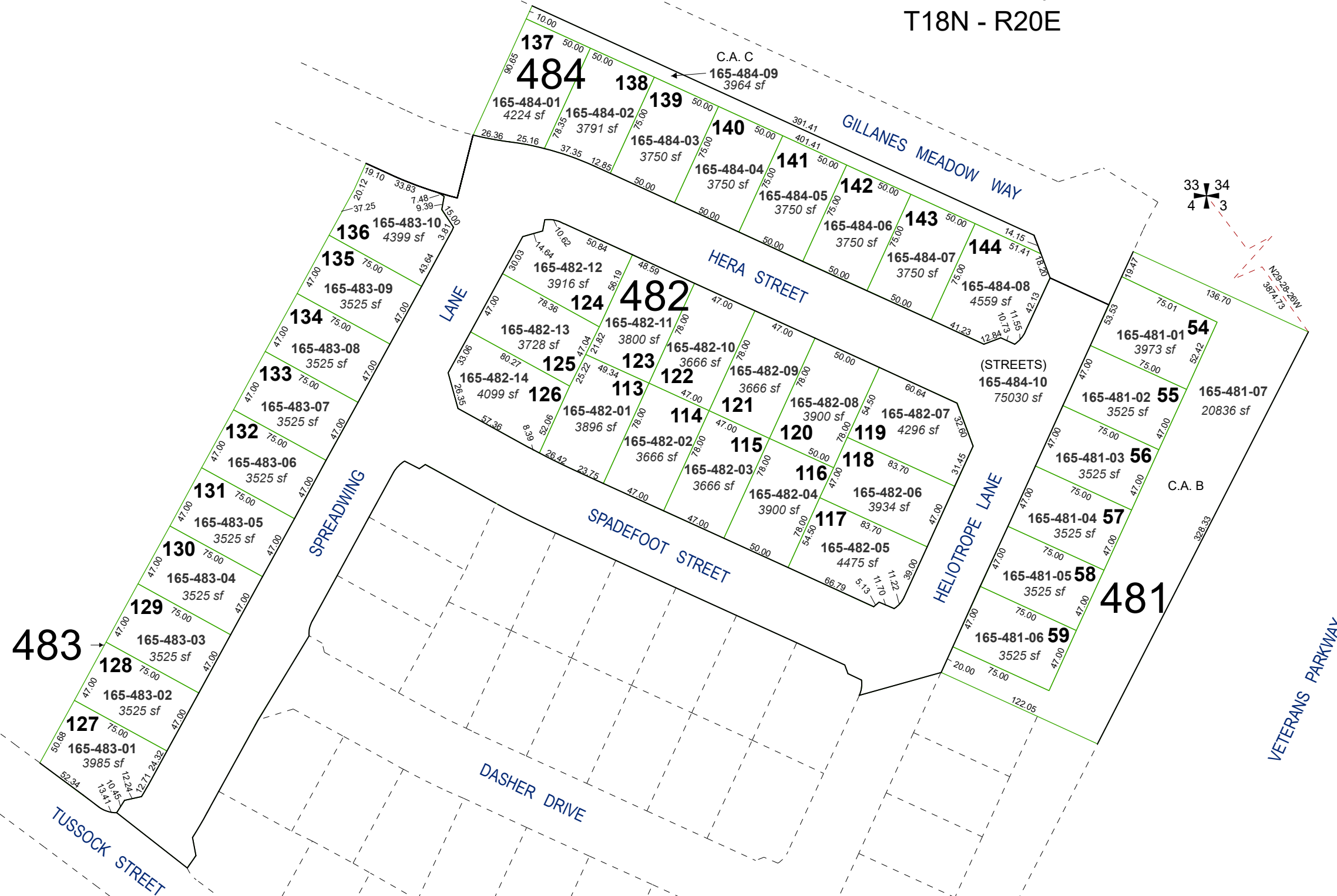
area previously shown on map(s):

165-32

NOTE: This map was prepared for the use of the Washoe County Assessor for assessment and illustrative purposes only. It does not represent a survey of the premises. No liability is assumed as to the sufficiency or accuracy of the data delineated hereon.

(#5620) TALUS VALLEY TOWN CENTER VILLAGE 22A

PORTION OF THE SW 1/4 SECTION 3 T18N - R20E



C.A. = COMMON AREA