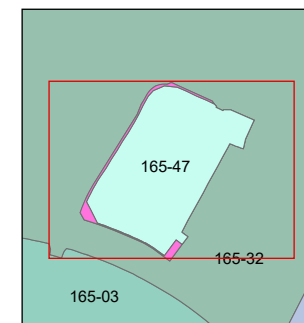
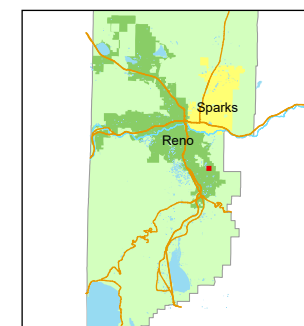


STATE OF NEVADA  
**WASHOE COUNTY**  
**ASSESSOR'S OFFICE**

1001 East Ninth Street, Building D  
Reno, Nevada 89512  
(775) 328-2231



1 inch = 80 feet

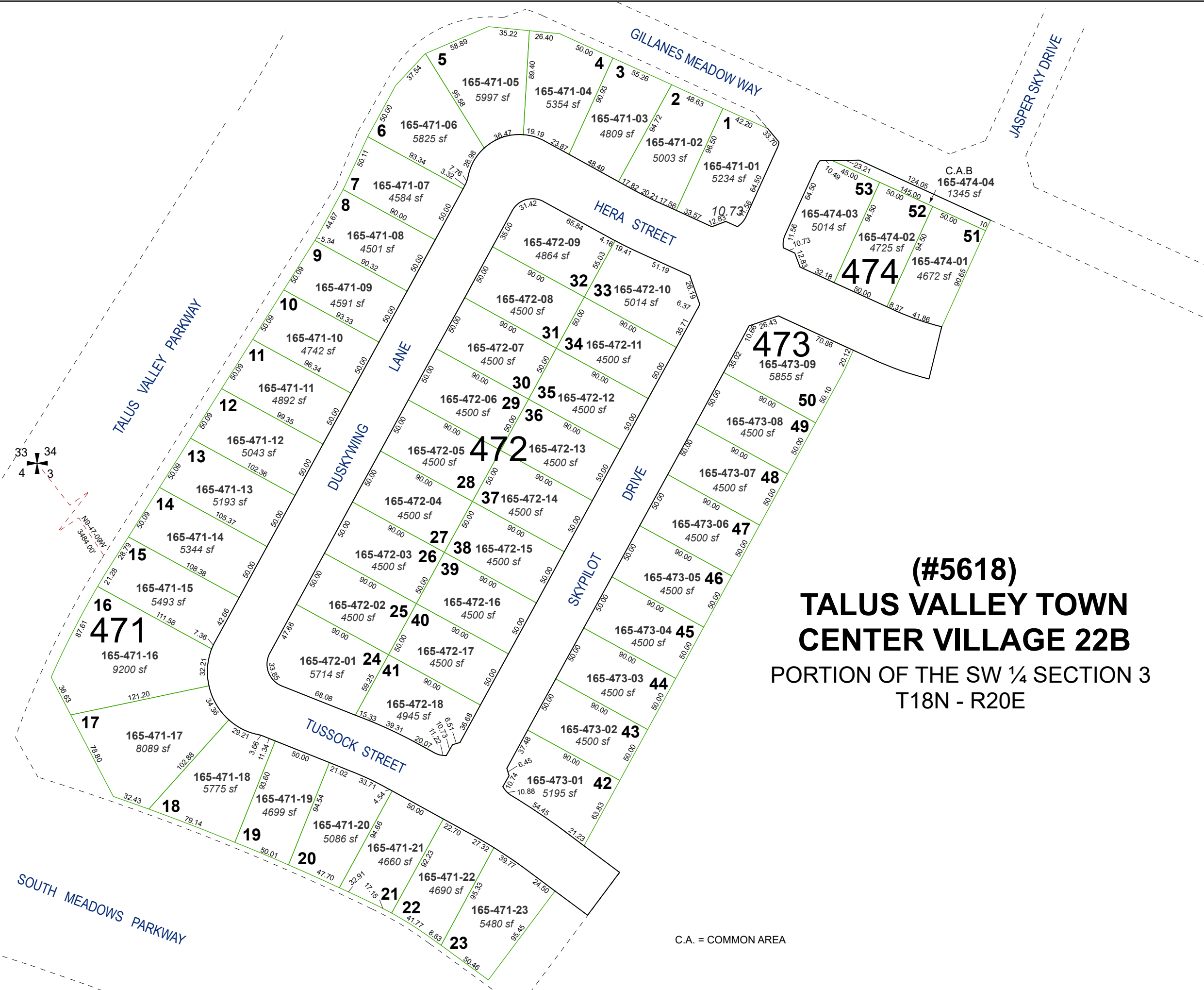


created by: JKF 3/12/26

updated: \_\_\_\_\_

area previously shown on map(s):  
165-32

NOTE: This map was prepared for the use of the Washoe County Assessor for assessment and illustrative purposes only. It does not represent a survey of the premises. No liability is assumed as to the sufficiency or accuracy of the data delineated hereon.



**(#5618)**  
**TALUS VALLEY TOWN**  
**CENTER VILLAGE 22B**  
PORTION OF THE SW ¼ SECTION 3  
T18N - R20E

C.A. = COMMON AREA