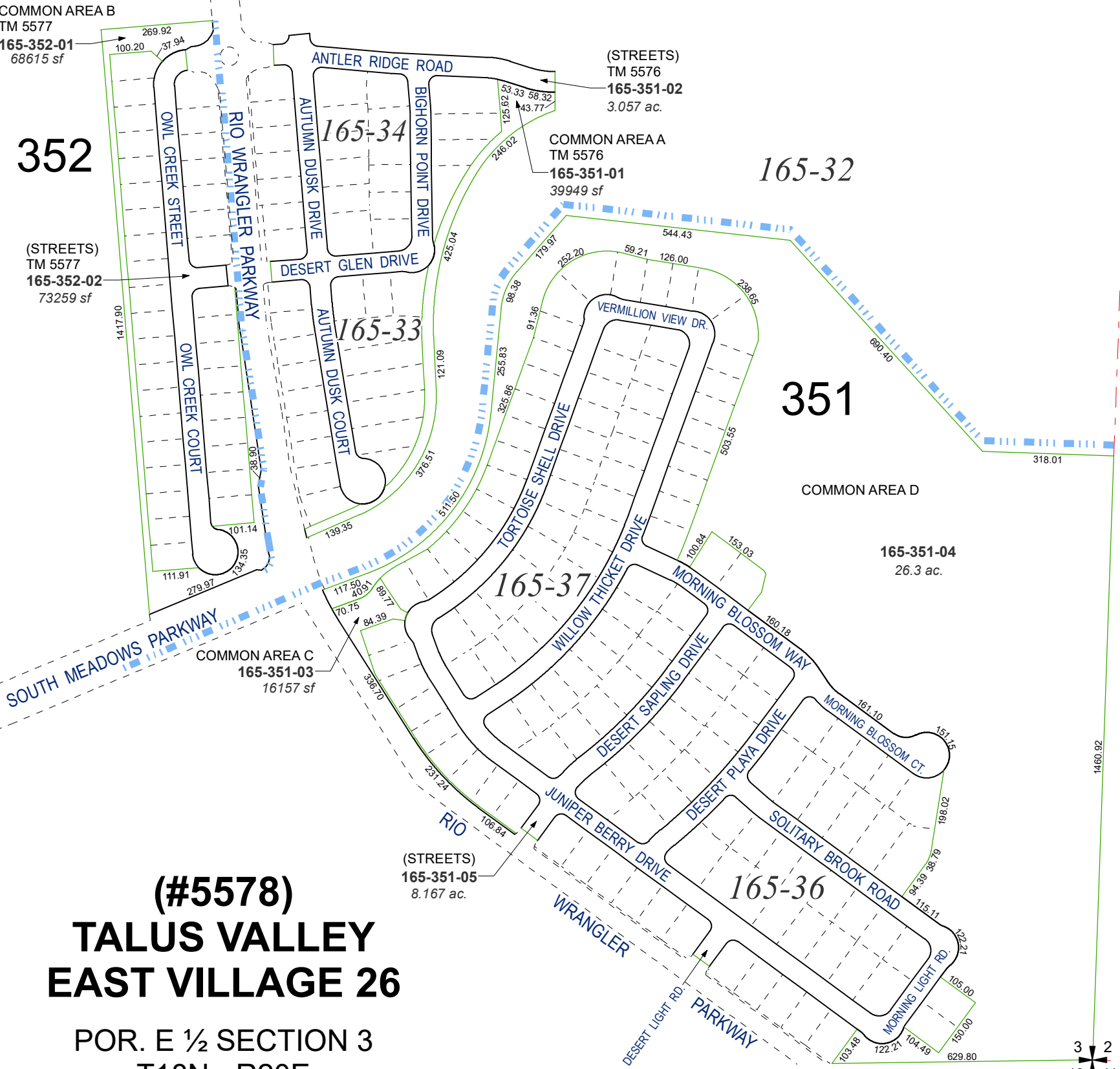


(#5577)
TALUS VALLEY
EAST VILLAGE 25

(#5576)
TALUS VALLEY
EAST VILLAGE 24S



(#5578)
TALUS VALLEY
EAST VILLAGE 26

POR. E 1/2 SECTION 3
T18N - R20E

Assessor's Map Number

165-35

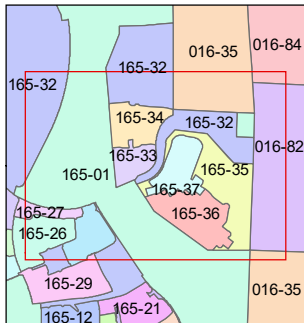
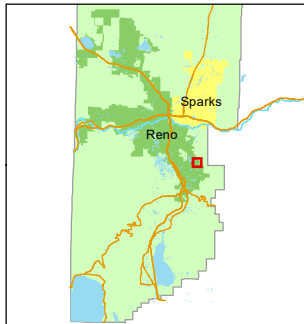
STATE OF NEVADA
WASHOE COUNTY
ASSESSOR'S OFFICE

1001 East Ninth Street, Building D
Reno, Nevada 89512
(775) 328-2231



Feet
0 75 150 225 300

1 inch = 300 feet



created by: JRA 09/06/2024

updated: JRA 9/13/24 JRA 9/19/24

area previously shown on map(s):

165-32

NOTE: This map was prepared for the use of the Washoe County Assessor for assessment and illustrative purposes only. It does not represent a survey of the premises. No liability is assumed as to the sufficiency or accuracy of the data delineated hereon.