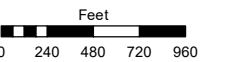
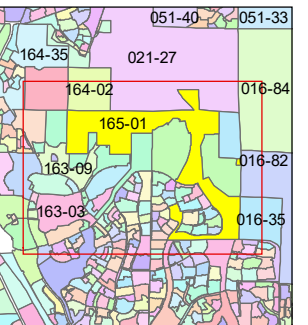
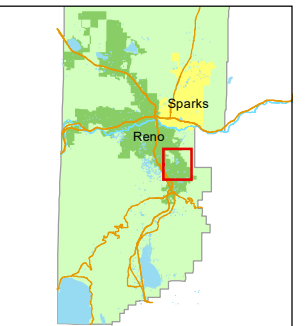


STATE OF NEVADA
WASHOE COUNTY
ASSESSOR'S OFFICE

1001 East Ninth Street, Building D
Reno, Nevada 89512
(775) 328-2231



1 inch = 1,000 feet



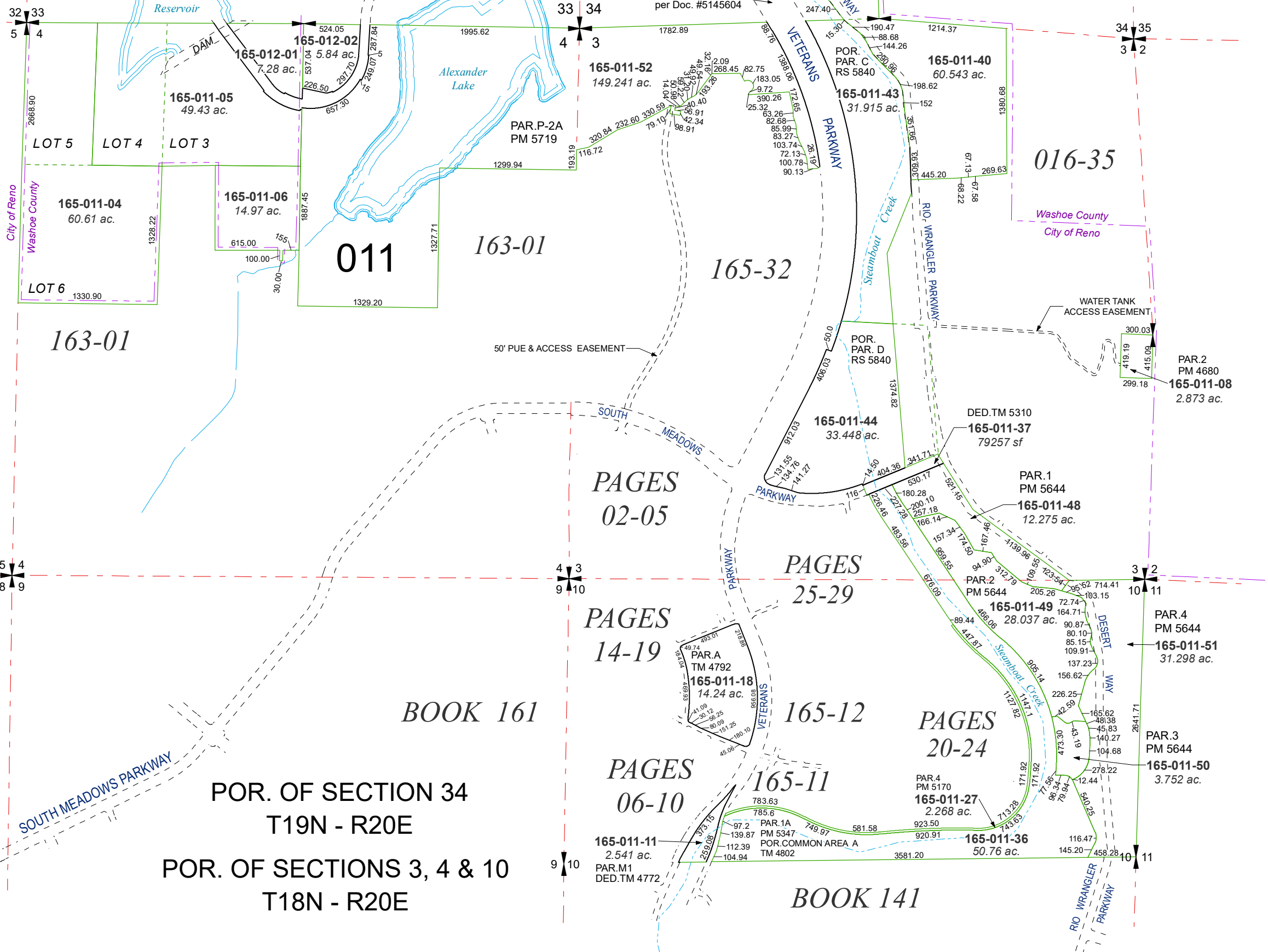
created by: CFB 09/17/2009

updated: JRA 02/28/24

area previously shown on map(s):

NOTE: This map was prepared for the use of the Washoe County Assessor for assessment and illustrative purposes only. It does not represent a survey of the premises. No liability is assumed as to the sufficiency or accuracy of the data delineated hereon.

163-01



012

011

163-01

165-32

016-35

PAGES
02-05

PAGES
25-29

PAGES
14-19

PAGES
06-10

165-12

165-11

PAGES
20-24

BOOK 161

BOOK 141

POR. OF SECTION 34
T19N - R20E

POR. OF SECTIONS 3, 4 & 10
T18N - R20E