

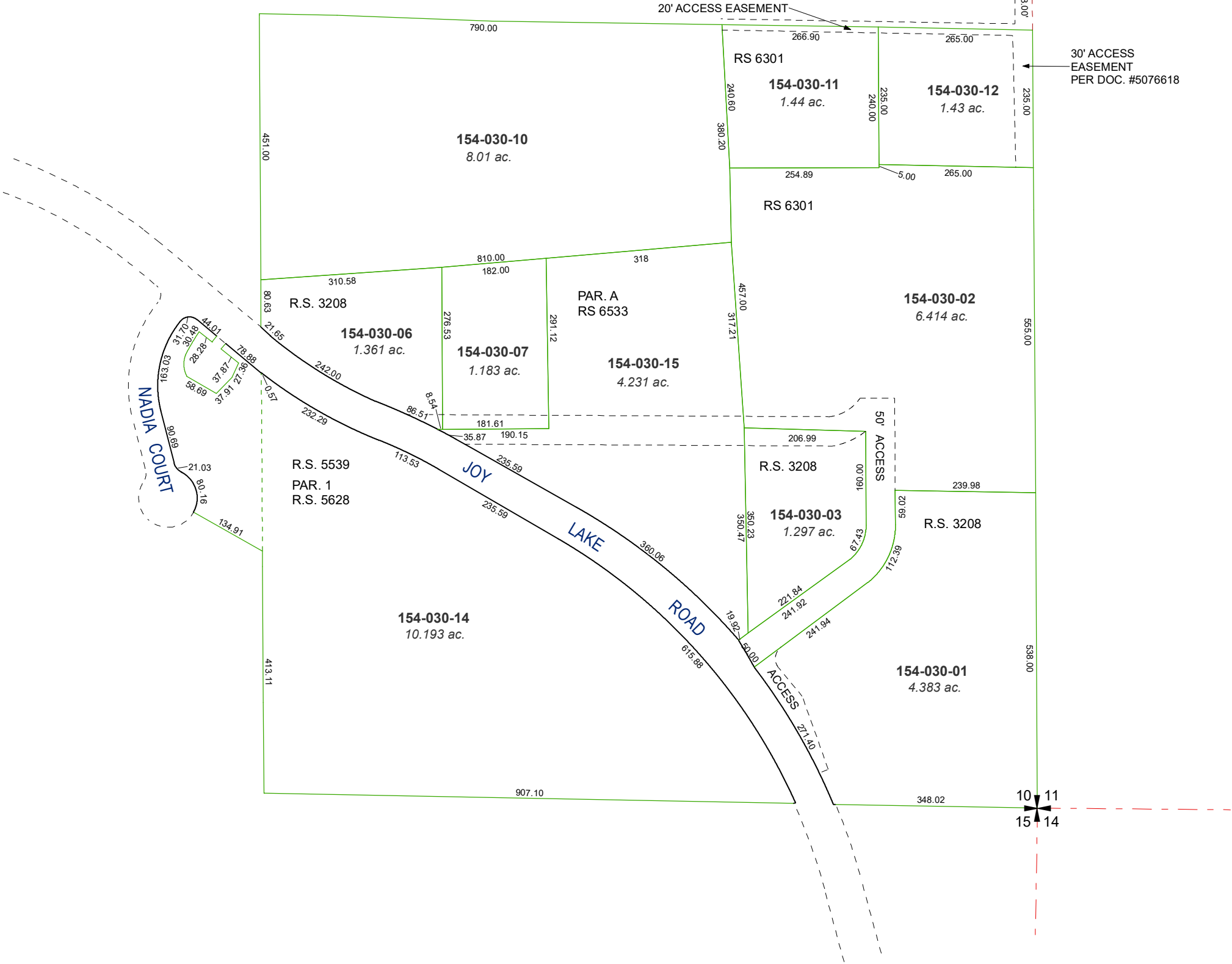
POR. OF SE¼ SECTION 10  
T17N - R19E

10 11

N 04°00'00"W  
1328.00'

30' ACCESS  
EASEMENT  
PER DOC. #5076618

20' ACCESS EASEMENT



Assessor's Map Number

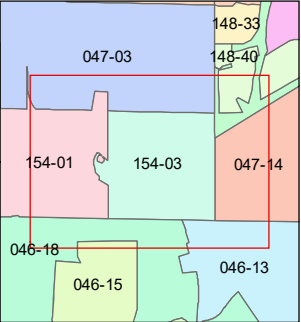
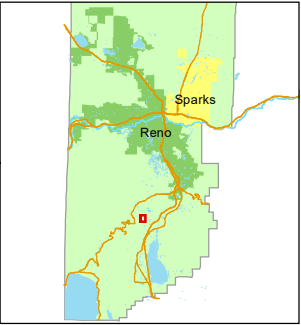
154-03

STATE OF NEVADA  
**WASHOE COUNTY**  
**ASSESSOR'S OFFICE**  
1001 East Ninth Street, Building D  
Reno, Nevada 89512  
(775) 328-2231



Feet  
0 50 100 150 200

1 inch = 200 feet



created by: KSB 3/06/2012

updated: CFB 1/16/14 KSB 5/08/15

JRA 10/27/21 JRA 02/12/24

area previously shown on map(s):

047-01

NOTE: This map was prepared for the use of the Washoe County Assessor for assessment and illustrative purposes only. It does not represent a survey of the premises. No liability is assumed as to the sufficiency or accuracy of the data delineated hereon.