

NW 1/4 SW 1/4 SECTION 36
T18N - R19E

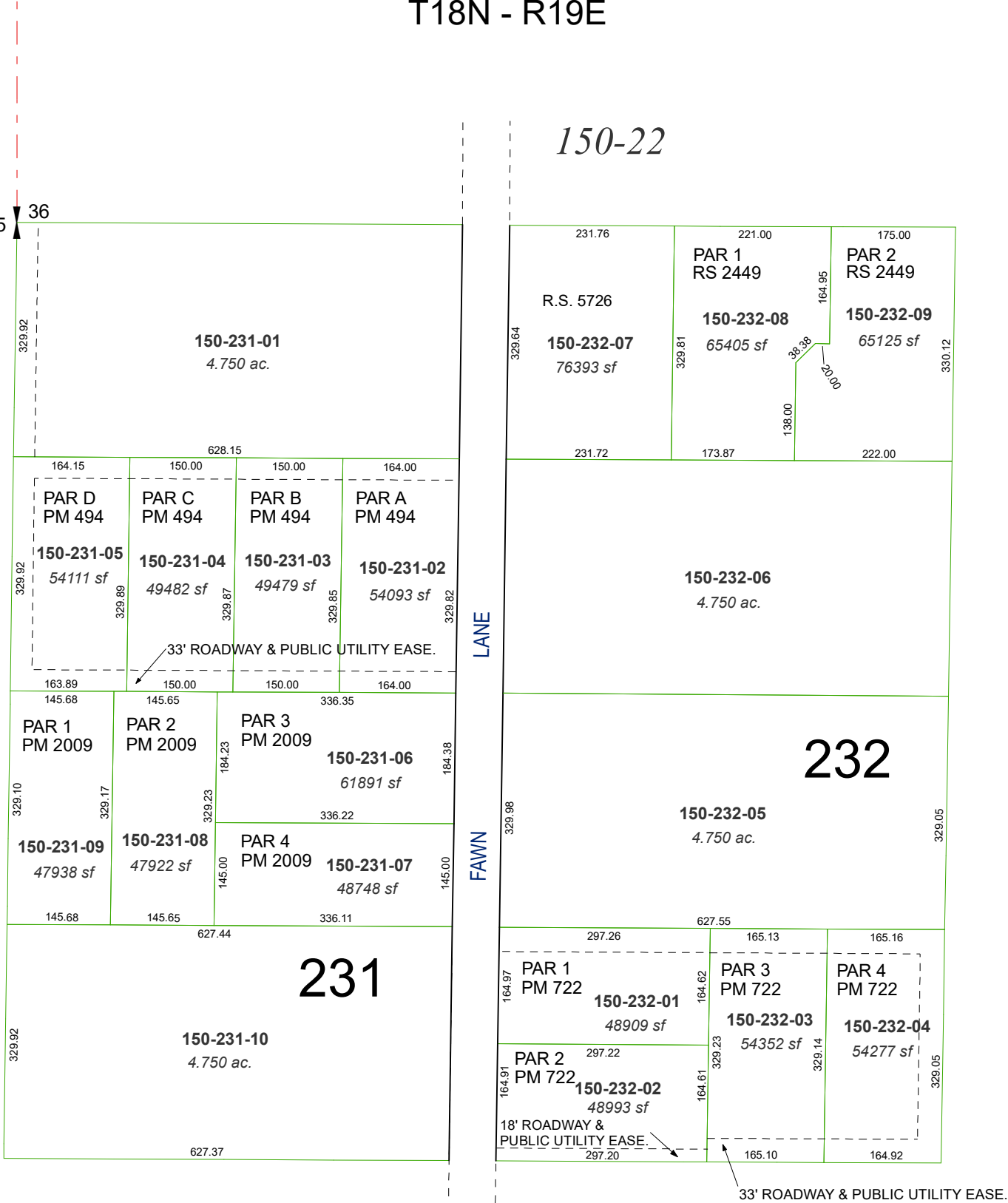
150-40

150-45

150-24

150-22

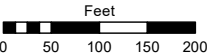
150-09



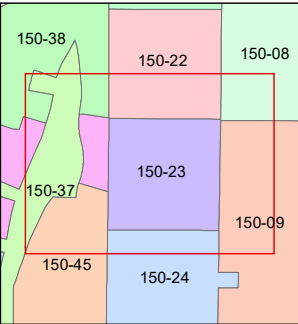
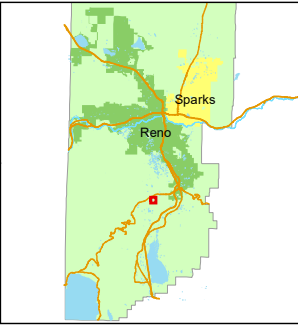
Assessor's Map Number

150-23

STATE OF NEVADA
WASHOE COUNTY
ASSESSOR'S OFFICE
1001 East Ninth Street, Building D
Reno, Nevada 89512
(775) 328-2231



1 inch = 200 feet



created by: KSB 9/18/2009

updated: JKF 10/7/22 JKF 5/6/24

area previously shown on map(s):

49-13

NOTE: This map was prepared for the use of the Washoe County Assessor for assessment and illustrative purposes only. It does not represent a survey of the premises. No liability is assumed as to the sufficiency or accuracy of the data delineated hereon.