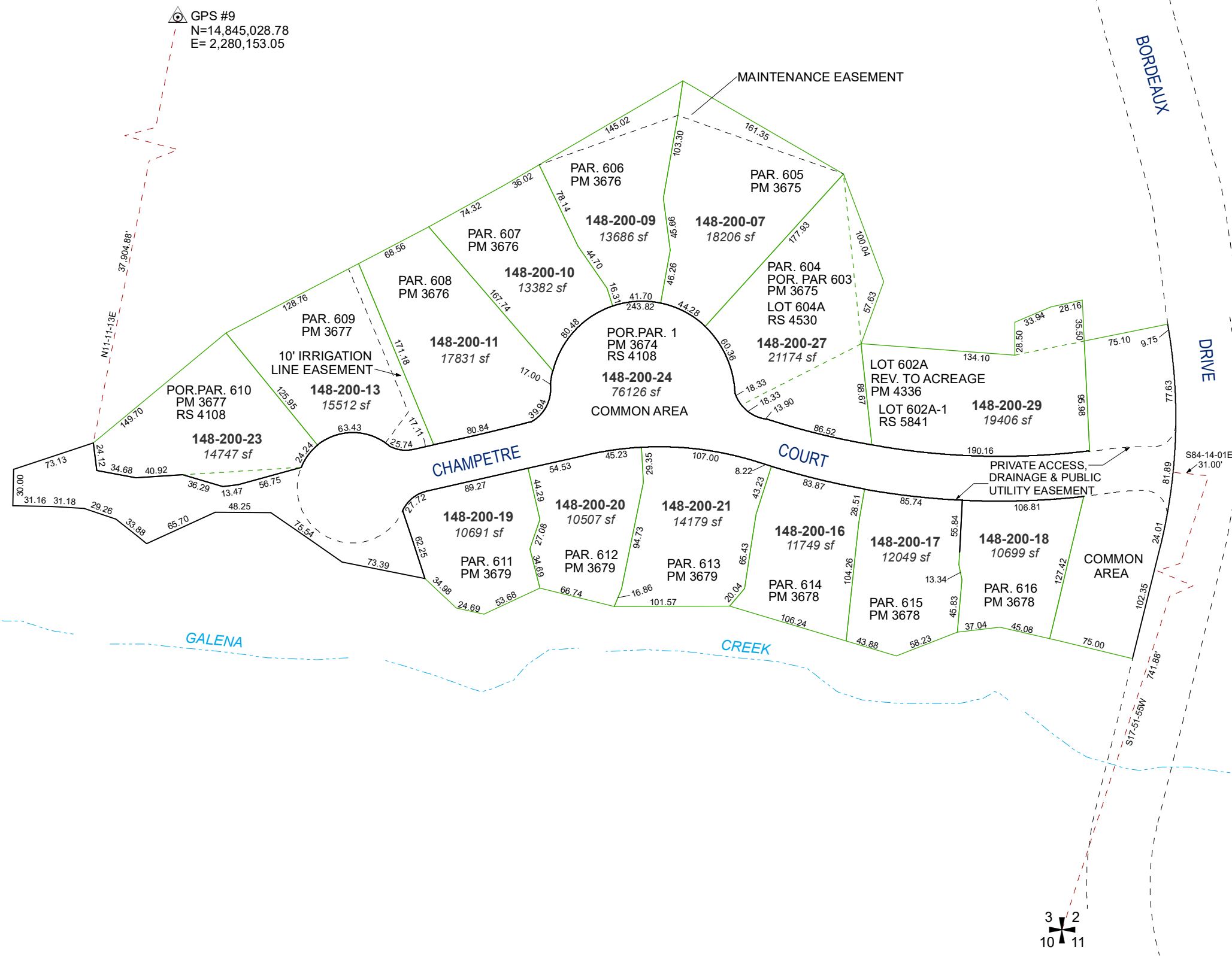


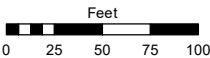
PORTIONS OF SW 1/4 OF SECTION 2 & SE 1/4 OF SECTION 3
T17N - R19E



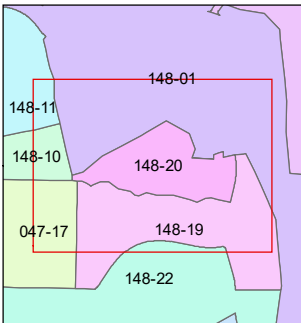
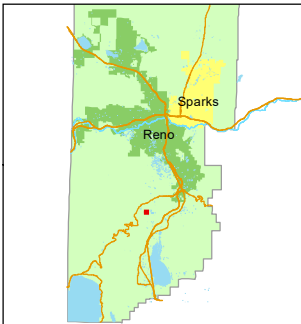
Assessor's Map Number

148-20

STATE OF NEVADA
WASHOE COUNTY
ASSESSOR'S OFFICE
1001 East Ninth Street, Building D
Reno, Nevada 89512
(775) 328-2231



1 inch = 100 feet



created by: JMO 06/28/2017

updated: _____

area previously shown on map(s):

148-01

NOTE: This map was prepared for the use of the Washoe County Assessor for assessment and illustrative purposes only. It does not represent a survey of the premises. No liability is assumed as to the sufficiency or accuracy of the data delineated hereon.