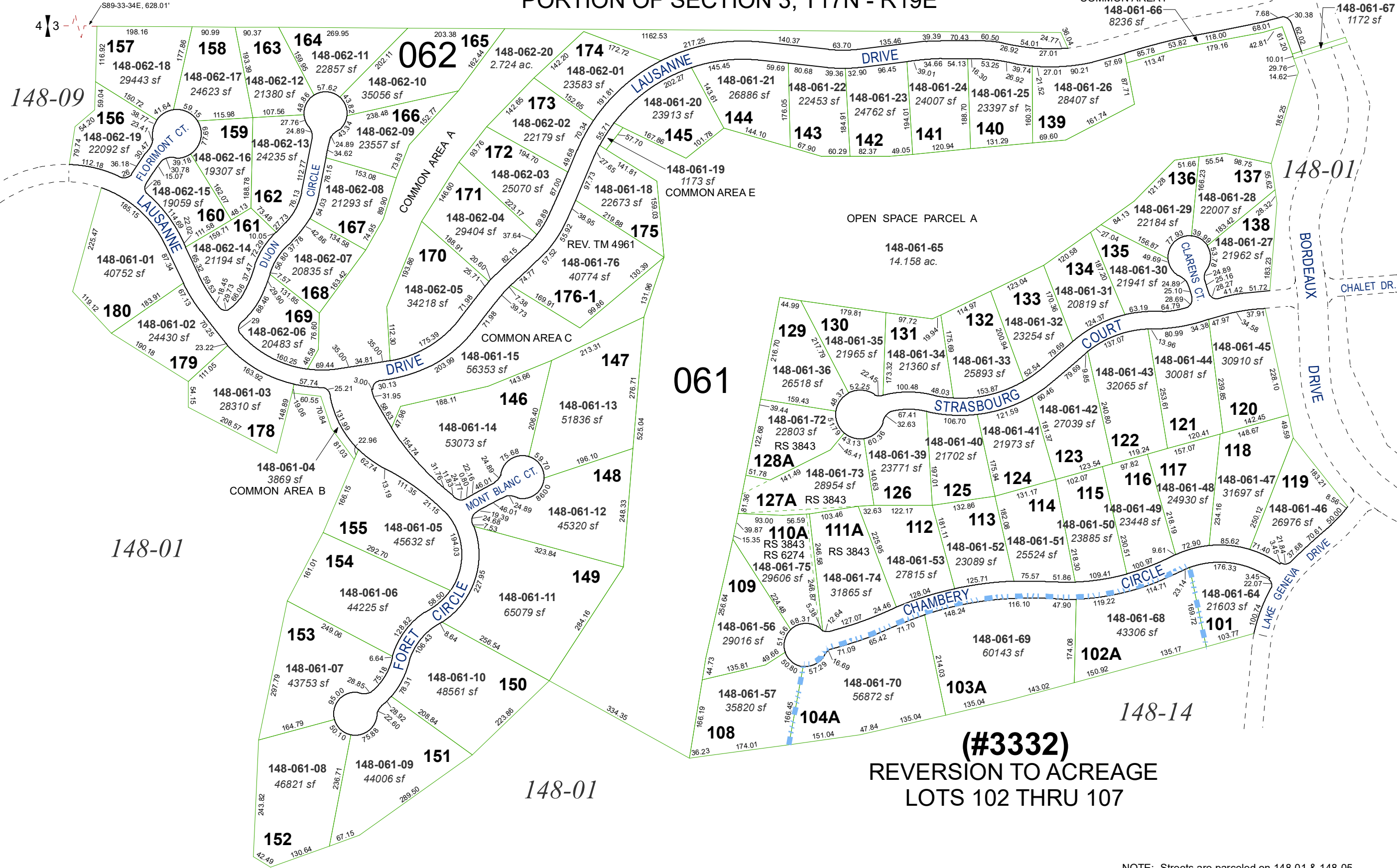


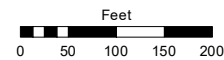
(#3296)  
**MONTREUX - UNIT 1**  
A COMMON INTEREST COMMUNITY  
PORTION OF SECTION 3, T17N - R19E



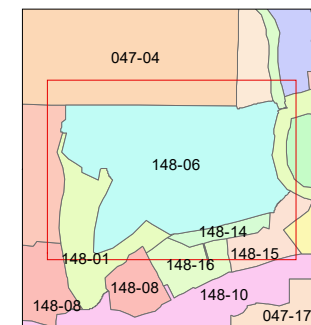
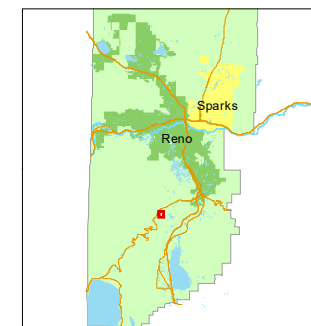
Assessor's Map Number

**148-06**

STATE OF NEVADA  
**WASHOE COUNTY**  
**ASSESSOR'S OFFICE**  
1001 East Ninth Street, Building D  
Reno, Nevada 89512  
(775) 328-2231



1 inch = 200 feet



created by: TWT 9/23/2009

updated: KSB 4/5/11 JFK 10/6/22

area previously shown on map(s):

047-04

NOTE: This map was prepared for the use of the Washoe County Assessor for assessment and illustrative purposes only. It does not represent a survey of the premises. No liability is assumed as to the sufficiency or accuracy of the data delineated hereon.

NOTE: Streets are parceled on 148-01 & 148-05