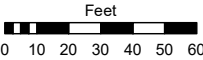
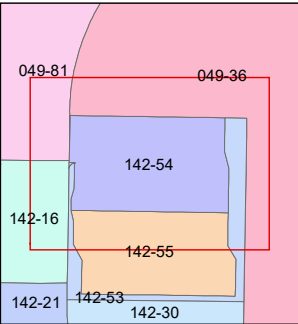
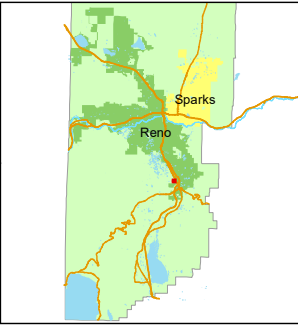


STATE OF NEVADA
WASHOE COUNTY
ASSESSOR'S OFFICE
1001 East Ninth Street, Building D
Reno, Nevada 89512
(775) 328-2231



1 inch = 60 feet



created by: JKF 5/24/2024

updated:

area previously shown on map(s):

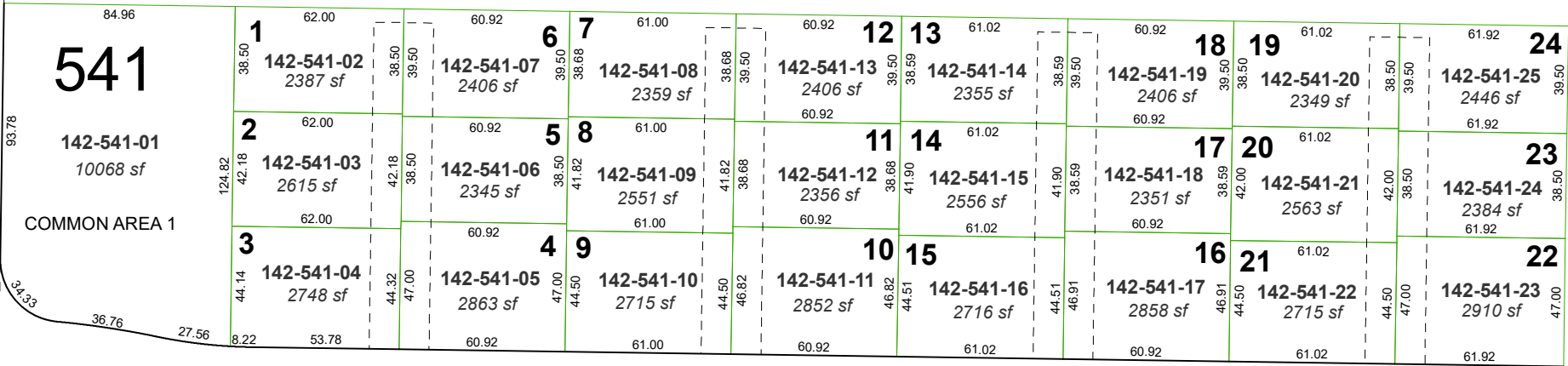
142-30

NOTE: This map was prepared for the use of the Washoe County Assessor for assessment and illustrative purposes only. It does not represent a survey of the premises. No liability is assumed as to the sufficiency or accuracy of the data delineated hereon.

(#5564)
COURTYARDS AT ARROWCREEK
PORTION OF THE NE ¼ SECTION 20
T18N - R20E

= 22' SHARED DRIVEWAY
& P.U.E

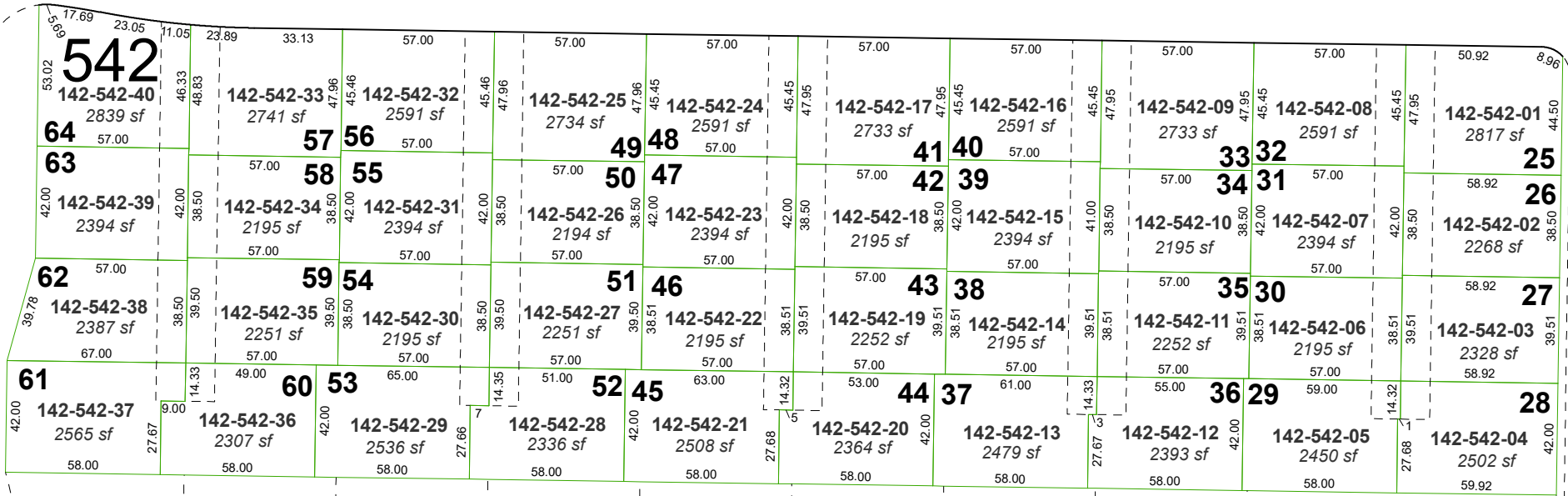
PARKWAY



RUBBLESTONE
DR.

TATTINGER WAY

ARROWCREEK



BOLINGER WAY

PROSECCO WAY