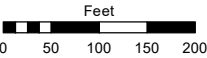
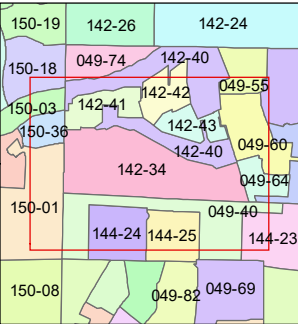
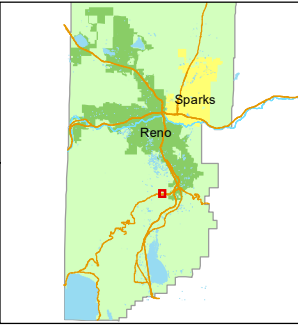


STATE OF NEVADA  
**WASHOE COUNTY**  
ASSESSOR'S OFFICE  
1001 East Ninth Street, Building D  
Reno, Nevada 89512  
(775) 328-2231



1 inch = 200 feet



created by: NLH 09/19/2012

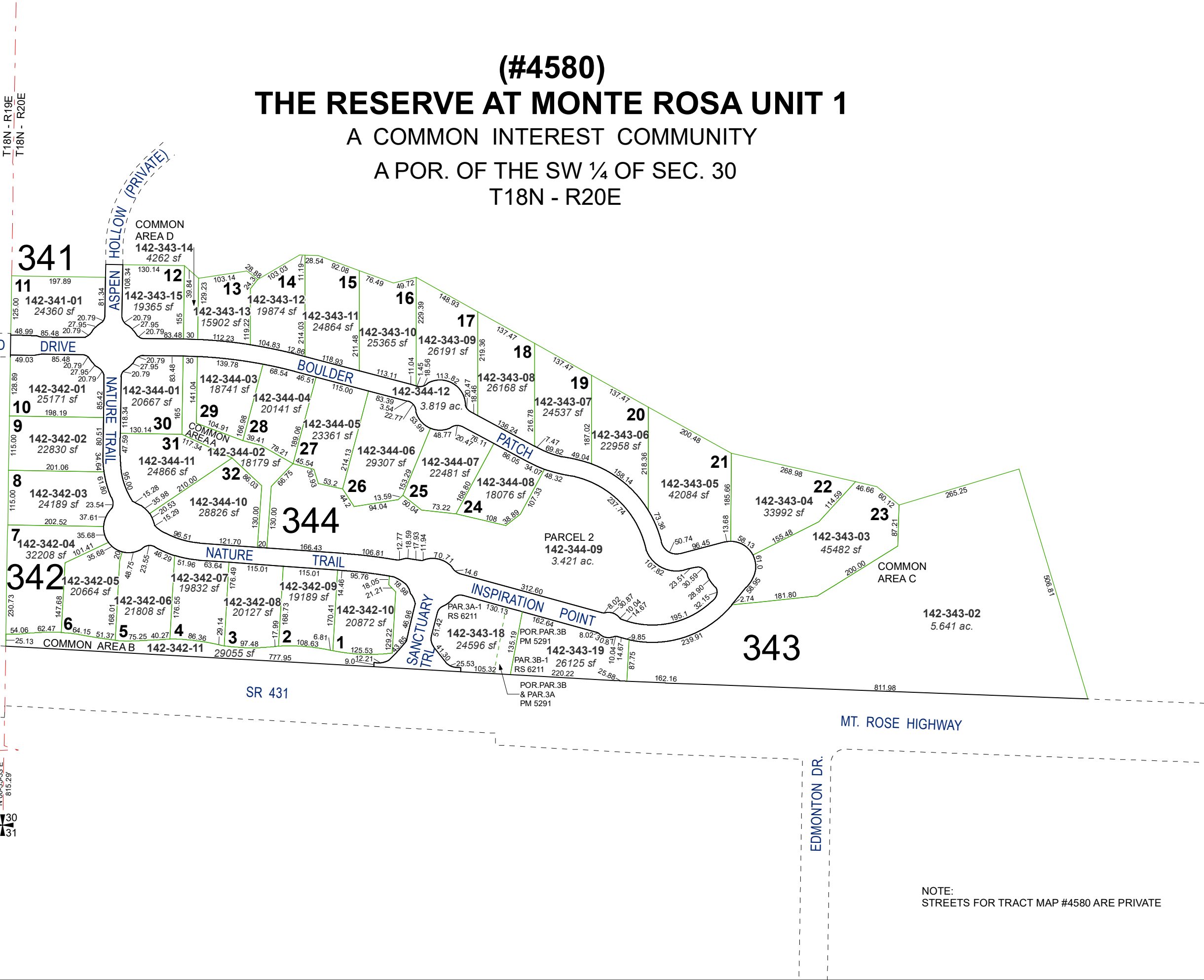
updated: JMO 06/19/17 SR 12/11/20

area previously shown on map(s):

049-40

NOTE: This map was prepared for the use of the Washoe County Assessor for assessment and illustrative purposes only. It does not represent a survey of the premises. No liability is assumed as to the sufficiency or accuracy of the data delineated hereon.

(#4580)  
**THE RESERVE AT MONTE ROSA UNIT 1**  
A COMMON INTEREST COMMUNITY  
A POR. OF THE SW ¼ OF SEC. 30  
T18N - R20E



NOTE:  
STREETS FOR TRACT MAP #4580 ARE PRIVATE