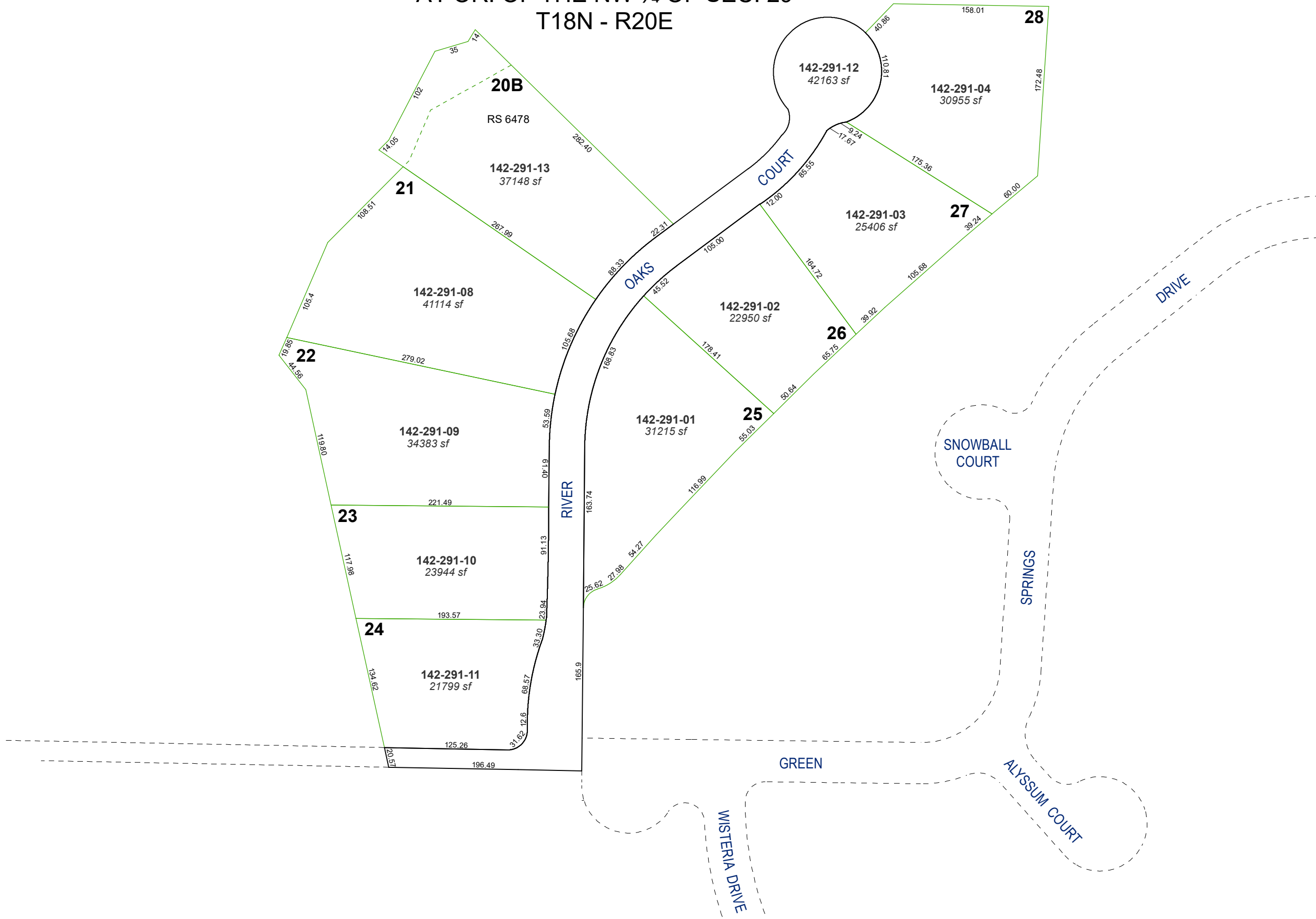


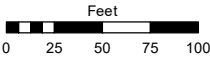
(#4374)  
**SUNRISE AT WHITES CREEK**  
A POR. OF THE NW ¼ OF SEC. 29  
T18N - R20E



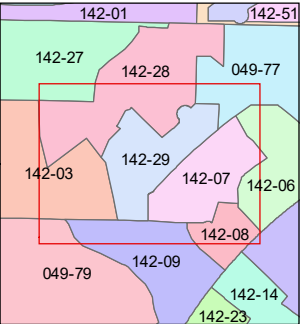
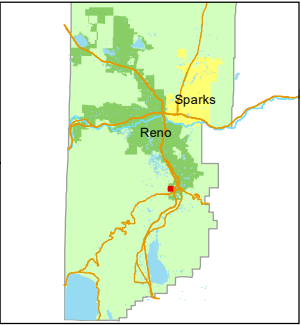
Assessor's Map Number

**142-29**

STATE OF NEVADA  
**WASHOE COUNTY**  
**ASSESSOR'S OFFICE**  
1001 East Ninth Street, Building D  
Reno, Nevada 89512  
(775) 328-2231



1 inch = 100 feet



created by: NLH 1/24/2011

updated: JRA 05/08/23

area previously shown on map(s):

049-25

NOTE: This map was prepared for the use of the Washoe County Assessor for assessment and illustrative purposes only. It does not represent a survey of the premises. No liability is assumed as to the sufficiency or accuracy of the data delineated hereon.