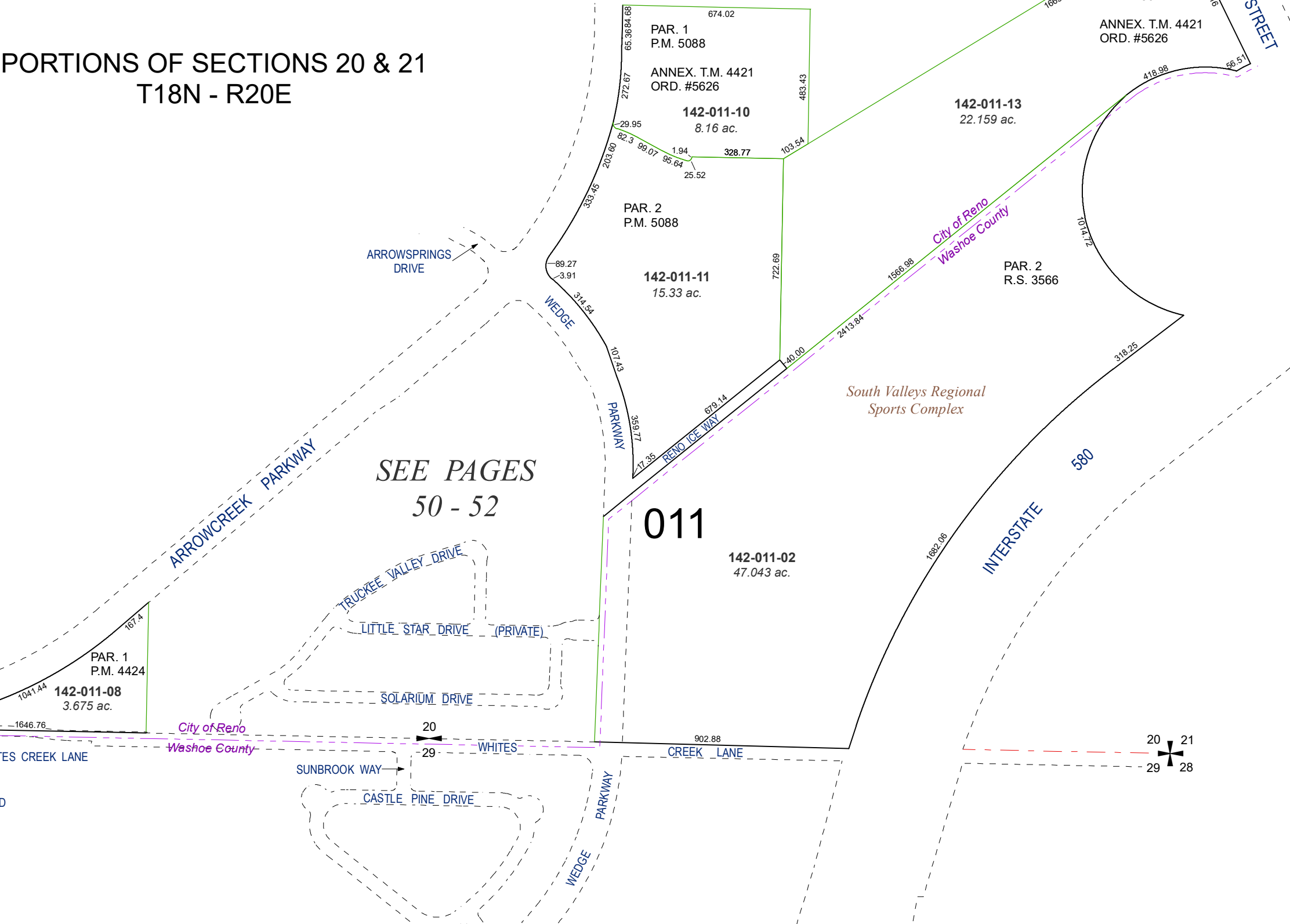


PORTIONS OF SECTIONS 20 & 21
T18N - R20E



SEE PAGES
50 - 52

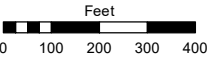
011

Assessor's Map Number

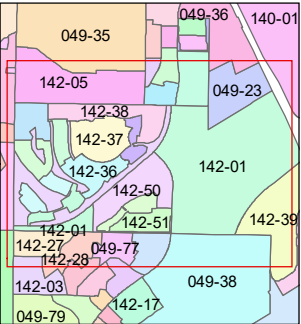
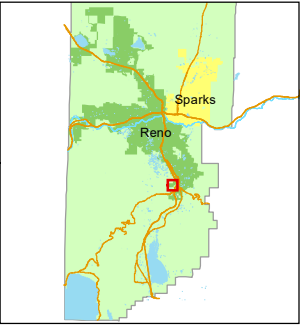
142-01

STATE OF NEVADA
WASHOE COUNTY
ASSESSOR'S OFFICE

1001 East Ninth Street, Building D
Reno, Nevada 89512
(775) 328-2231



1 inch = 400 feet



created by: NLH 01/10/2011

updated: SR 11/1/16 SR 6/29/18

KGC 10/22/24

area previously shown on map(s):

049-23

NOTE: This map was prepared for the use of the Washoe County Assessor for assessment and illustrative purposes only. It does not represent a survey of the premises. No liability is assumed as to the sufficiency or accuracy of the data delineated hereon.