

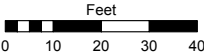
(#5260)
**ESPLANADE AT DAMONTE RANCH
VILLAGE 24-E**

A CONDOMINIUM SUBDIVISION
PORTION OF SW¼ SECTION 15
T18N - R20E

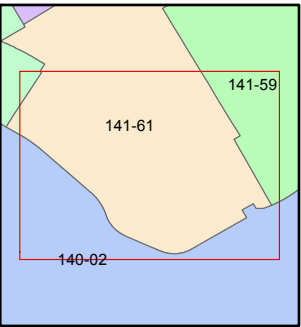
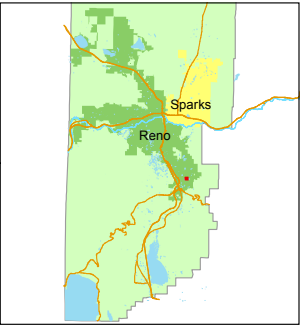
Assessor's Map Number
141-61-S7

STATE OF NEVADA
**WASHOE COUNTY
ASSESSOR'S OFFICE**
Michael E. Clark, Assessor

1001 East Ninth Street
Building D
Reno, Nevada 89512
(775) 328-2231



1 inch = 40 feet



created by: SR 05/02/2018

last updated: _____

area previously shown on map(s)

141-59

NOTE: This map was prepared for the use of the Washoe County Assessor for assessment and illustrative purposes only. It does not represent a survey of the premises. No liability is assumed as to the sufficiency or accuracy of the data delineated hereon.

141-61-S5

DARK HORSE ROAD

617

PRIVATE ACCESS EASEMENT & PUE

DARK HORSE ROAD

FIRST FLOOR

130 = BUILDING NUMBER

130-1 = UNIT NUMBER

A-R = BUILDING TYPE

LCE = LIMITED COMMON ELEMENT

NOTES

- BUILDINGS NOTED WITH AN "R" ARE REVERSED FLOORPLANS
- SEE PAGES 141-61-S1 & S2 FOR UNIT DETAILS
- SEE PAGE 141-61-S8 FOR SECOND FLOOR

