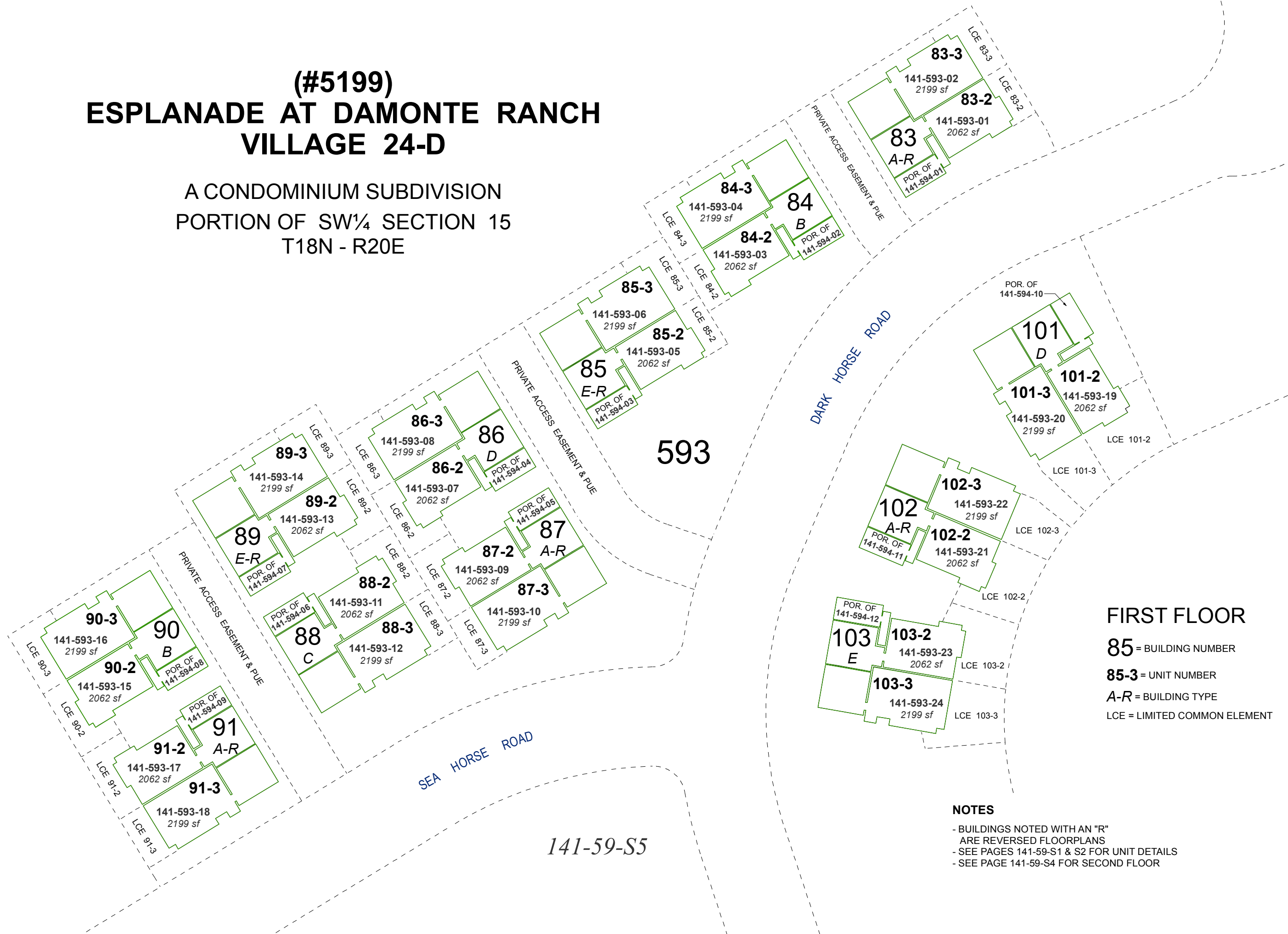


(#5199)  
**ESPLANADE AT DAMONTE RANCH  
VILLAGE 24-D**

A CONDOMINIUM SUBDIVISION  
PORTION OF SW¼ SECTION 15  
T18N - R20E



**FIRST FLOOR**

**85** = BUILDING NUMBER

**85-3** = UNIT NUMBER

**A-R** = BUILDING TYPE

LCE = LIMITED COMMON ELEMENT

**NOTES**

- BUILDINGS NOTED WITH AN "R"  
ARE REVERSED FLOORPLANS
- SEE PAGES 141-59-S1 & S2 FOR UNIT DETAILS
- SEE PAGE 141-59-S4 FOR SECOND FLOOR

Assessor's Map Number

**141-59-S3**

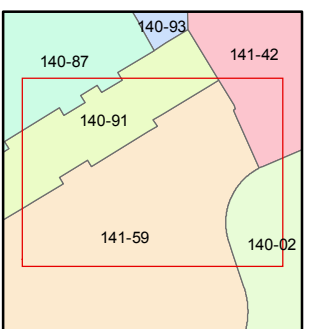
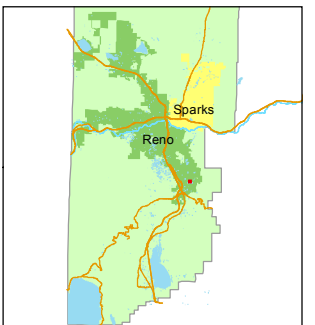
STATE OF NEVADA  
**WASHOE COUNTY**  
ASSESSOR'S OFFICE  
Michael E. Clark, Assessor

1001 East Ninth Street  
Building D  
Reno, Nevada 89512  
(775) 328-2231



Feet  
0 10 20 30 40

1 inch = 40 feet



created by: SR 05/10/2017

last updated: \_\_\_\_\_

area previously shown on map(s)

140-91

NOTE: This map was prepared for the use of the Washoe County Assessor for assessment and illustrative purposes only. It does not represent a survey of the premises. No liability is assumed as to the sufficiency or accuracy of the data delineated hereon.