

STEAMBOAT PARKWAY

WIND RANCH ROAD

SEA HORSE ROAD

DARK HORSE ROAD

COMMON
ELEMENT D-1
141-590-01
30125 sf

PRIVATE ACCESS
EASEMENT & PUE

PRIVATE ACCESS
EASEMENT & PUE

COMMON
ELEMENT D-2
141-590-02
53413 sf

PRIVATE ACCESS
EASEMENT & PUE

COMMON
ELEMENT D-3
141-590-03
33612 sf

NOTES:

- See PAGES 141-59-S1 & 141-59-S2 for UNIT DETAILS
- See PAGES 141-59-S3 thru 141-59-S8 for UNITS

99 = BUILDING NUMBER

**(#5199)
ESPLANADE AT DAMONTE RANCH
VILLAGE 24-D**

A CONDOMINIUM SUBDIVISION
PORTION OF SW¼ SECTION 15
T18N - R20E

Assessor's Map Number

141-59

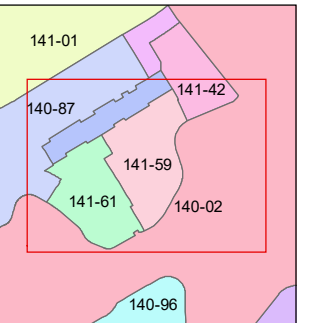
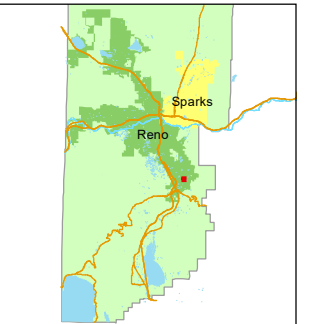
STATE OF NEVADA
WASHOE COUNTY
ASSESSOR'S OFFICE

1001 East Ninth Street, Building D
Reno, Nevada 89512
(775) 328-2231



Feet
0 25 50 75 100

1 inch = 100 feet



created by: SR 05/17/2017

updated: SR 04/30/18 SR 09/12/19

area previously shown on map(s):

140-91

NOTE: This map was prepared for the use of the Washoe County Assessor for assessment and illustrative purposes only. It does not represent a survey of the premises. No liability is assumed as to the sufficiency or accuracy of the data delineated hereon.