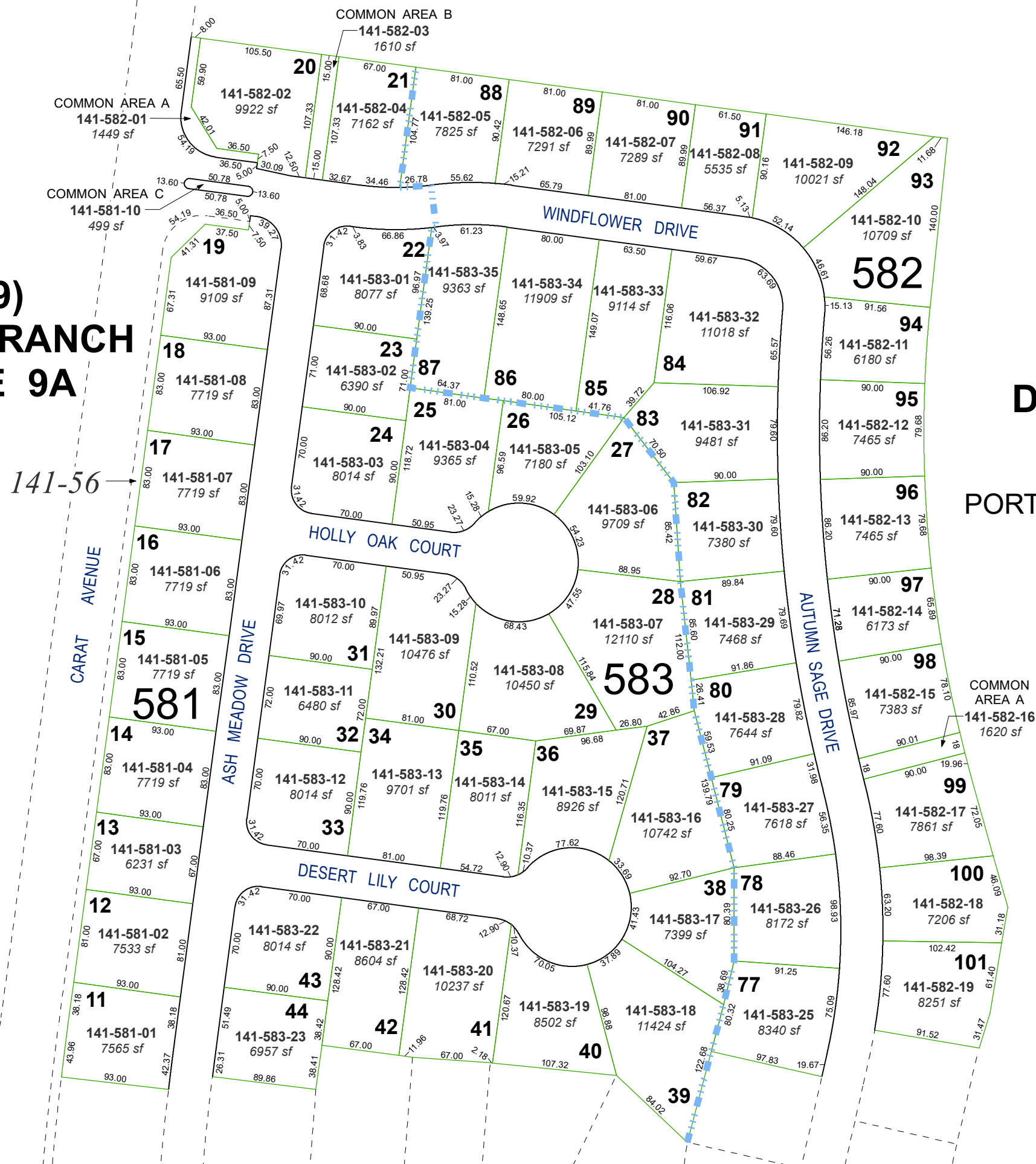


(#5189)
**DAMONTE RANCH
VILLAGE 9A**



(#5233)
**DAMONTE RANCH
VILLAGE 9B**

PORTION OF SE1/4 SECTION 10
& NE1/4 SECTION 15
T18N - R20E

Assessor's Map Number

141-58

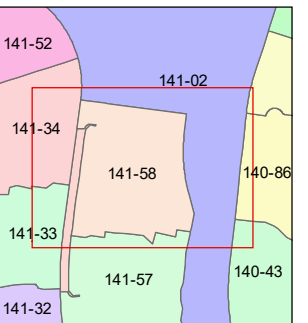
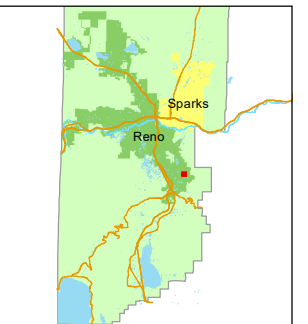
STATE OF NEVADA
WASHOE COUNTY
ASSESSOR'S OFFICE

1001 East Ninth Street, Building D
Reno, Nevada 89512
(775) 328-2231



Feet
0 25 50 75 100

1 inch = 100 feet



created by: **SR 12/16/2016**

updated: **SR 11/06/17 SR 06/18/19**

SR 09/26/19

area previously shown on map(s):

141-02 141-56

NOTE: This map was prepared for the use of the Washoe County Assessor for assessment and illustrative purposes only. It does not represent a survey of the premises. No liability is assumed as to the sufficiency or accuracy of the data delineated hereon.