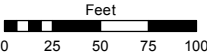
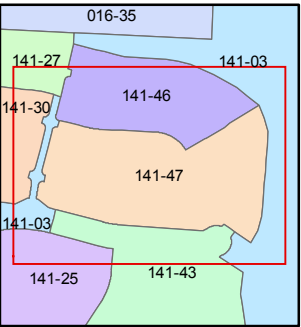
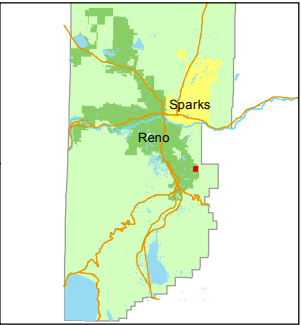


STATE OF NEVADA  
**WASHOE COUNTY**  
**ASSESSOR'S OFFICE**  
Michael E. Clark, Assessor

1001 East Ninth Street  
Building D  
Reno, Nevada 89512  
(775) 328-2231



1 inch = 100 feet



created by: EMG 02/02/2016

last updated: \_\_\_\_\_

area previously shown on map(s)

141-03

NOTE: This map was prepared for the use of the Washoe County Assessor for assessment and illustrative purposes only. It does not represent a survey of the premises. No liability is assumed as to the sufficiency or accuracy of the data delineated herein.

NOTE: Streets are parceled on page 141-45.

(#5148)

**DAMONTE RANCH - VILLAGE 10C**

PORTION OF THE WEST ½ SECTION 11  
T18N - R20E

