

(#5138)
ESPLANADE AT DAMONTE RANCH
VILLAGE 24-C UNIT 2
A CONDOMINIUM SUBDIVISION

POR. OF SW ¼ SECTION 15
T18N - R20E

FIRST FLOOR

67 = BUILDING NUMBER
67-3 = UNIT NUMBER
A-R = BUILDING TYPE
LCE = LIMITED COMMON ELEMENT

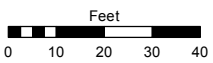
NOTES:
- Buildings noted with a letter and an "R"
are reversed floorplans
- See PAGES 141-42-S1 & 141-42-S2 for UNIT DETAILS
- See PAGE 141-42-S4 for 2ND FLOOR

Assessor's Map Number

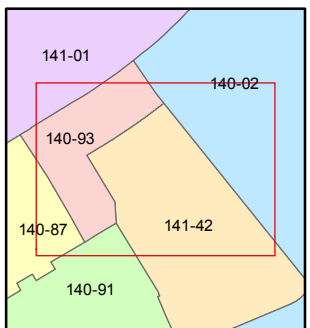
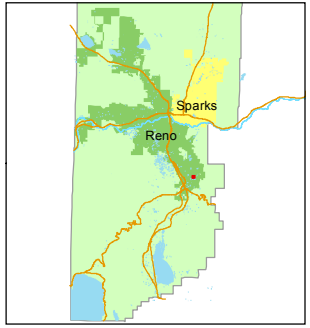
141-42-S3

STATE OF NEVADA
WASHOE COUNTY
ASSESSOR'S OFFICE
Michael E. Clark, Assessor

1001 East Ninth Street
Building D
Reno, Nevada 89512
(775) 328-2231



1 inch = 40 feet



created by: KSB 11/20/2015

last updated: _____

area previously shown on map(s)
140-93

NOTE: This map was prepared for the use of the Washoe County Assessor for assessment and illustrative purposes only. It does not represent a survey of the premises. No liability is assumed as to the sufficiency or accuracy of the data delineated hereon.

