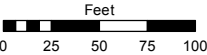
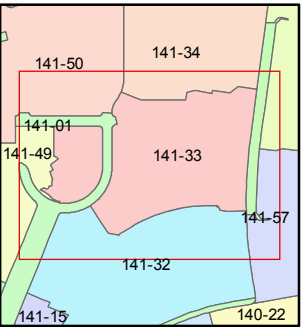
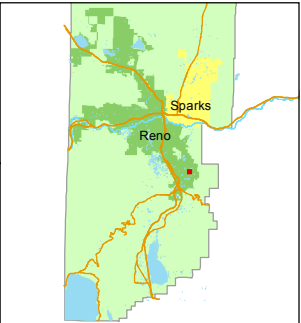


STATE OF NEVADA
WASHOE COUNTY
ASSESSOR'S OFFICE
Michael E. Clark, Assessor

1001 East Ninth Street
Building D
Reno, Nevada 89512
(775) 328-2231



1 inch = 100 feet



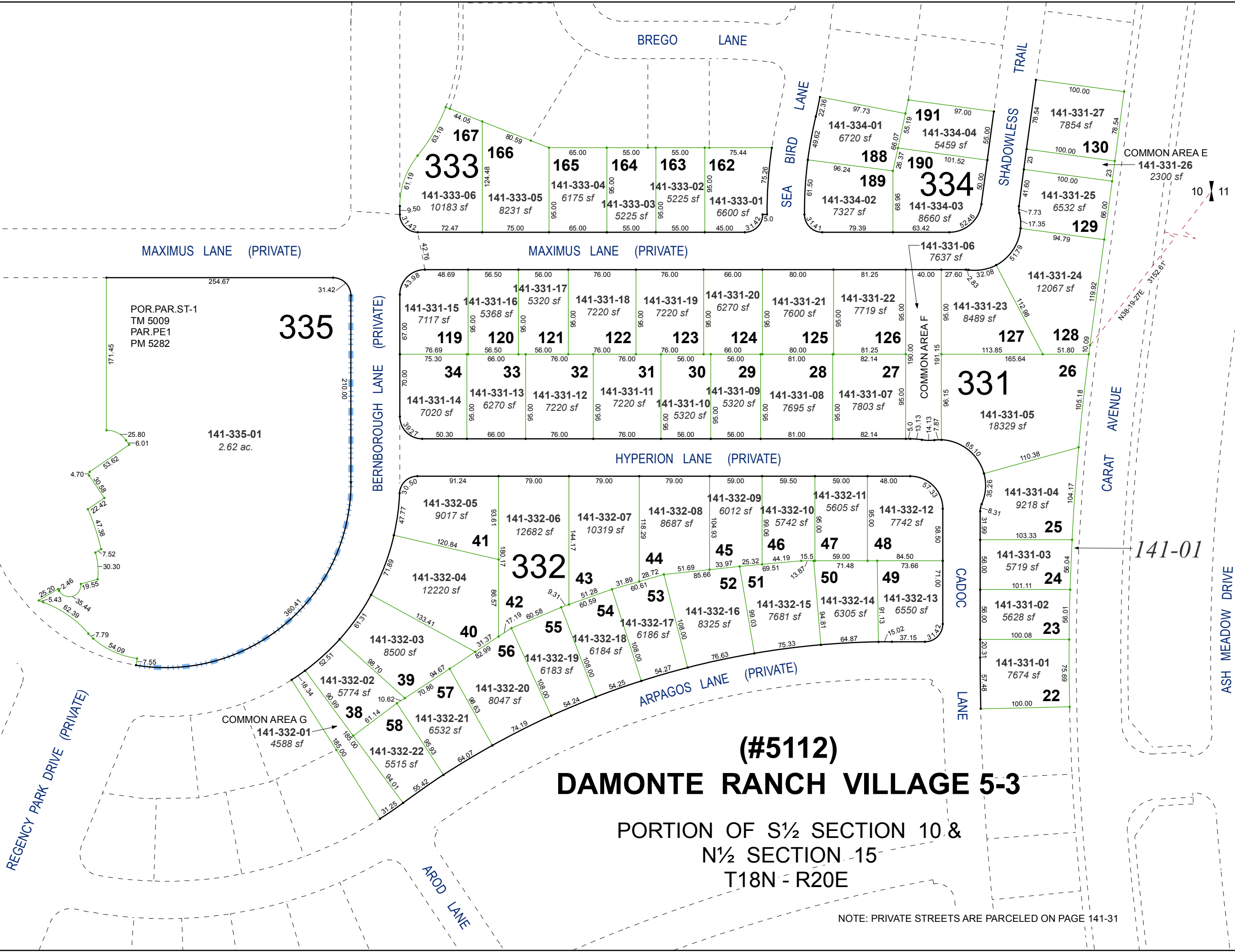
created by: KSB 03/09/2015

last updated: EMG 9/02/15 SR 4/20/17

area previously shown on map(s)

141-01

NOTE: This map was prepared for the use of the Washoe County Assessor for assessment and illustrative purposes only. It does not represent a survey of the premises. No liability is assumed as to the sufficiency or accuracy of the data delineated hereon.



(#5112)
DAMONTE RANCH VILLAGE 5-3

PORTION OF S½ SECTION 10 &
N½ SECTION 15
T18N - R20E

NOTE: PRIVATE STREETS ARE PARCELED ON PAGE 141-31