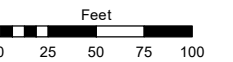
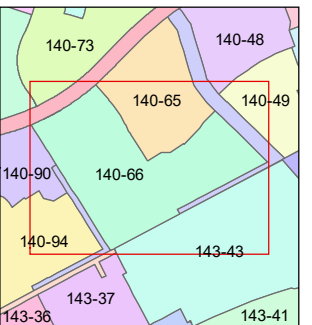
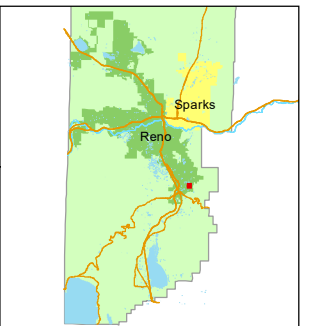


STATE OF NEVADA
WASHOE COUNTY
ASSESSOR'S OFFICE

1001 East Ninth Street, Building D
Reno, Nevada 89512
(775) 328-2231



1 inch = 100 feet



created by: NLH 12/15/2010

updated: SR 07/26/21 SR 10/04/21

area previously shown on map(s):

140-02

NOTE: This map was prepared for the use of the Washoe County Assessor for assessment and illustrative purposes only. It does not represent a survey of the premises. No liability is assumed as to the sufficiency or accuracy of the data delineated hereon.

(#4454)
VILLAGES AT
DAMONTE RANCH
UNIT 19A-1

PORTION OF NE¼ SECTION 22
T18N - R20E

(#4599)
VILLAGES AT
DAMONTE RANCH
UNIT 19A-2

