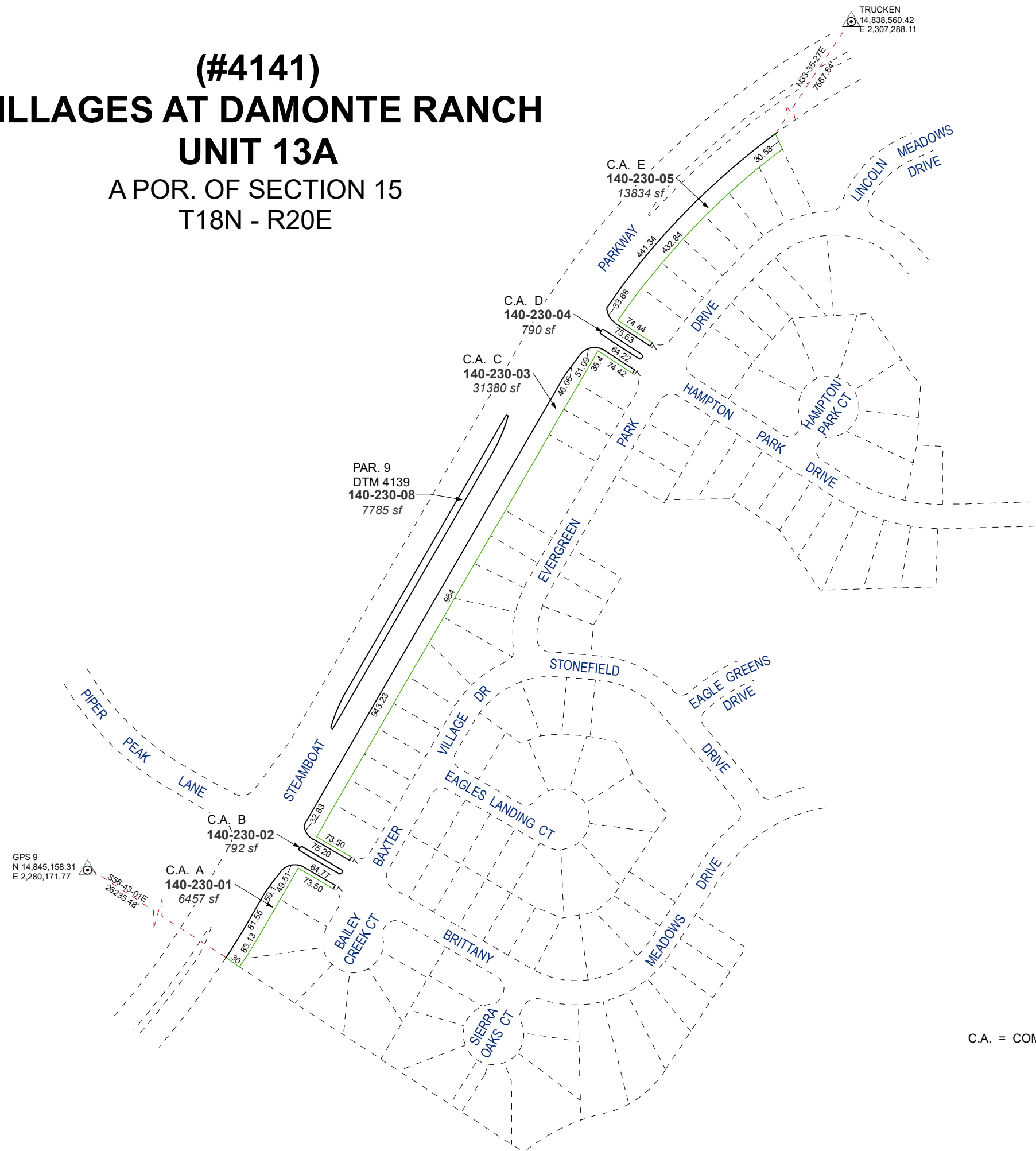


(#4141)
VILLAGES AT DAMONTE RANCH
UNIT 13A
A POR. OF SECTION 15
T18N - R20E



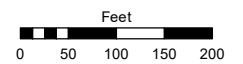
C.A. = COMMON AREA

Assessor's Map Number

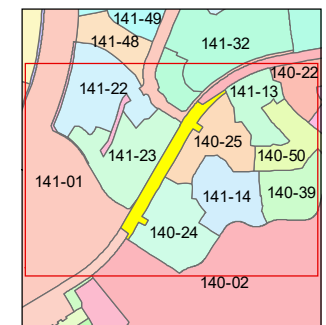
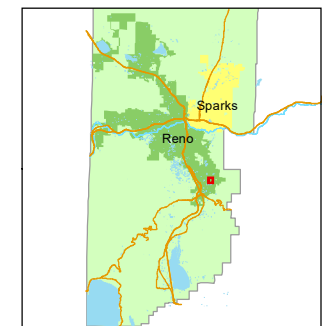
140-23

STATE OF NEVADA
WASHOE COUNTY
ASSESSOR'S OFFICE

1001 East Ninth Street, Building D
Reno, Nevada 89512
(775) 328-2231



1 inch = 200 feet



created by: NLH 6/22/2011

updated: JRA 4/26/24

area previously shown on map(s):

140-02

NOTE: This map was prepared for the use of the Washoe County Assessor for assessment and illustrative purposes only. It does not represent a survey of the premises. No liability is assumed as to the sufficiency or accuracy of the data delineated hereon.