

Assessor's Map Number

140-01

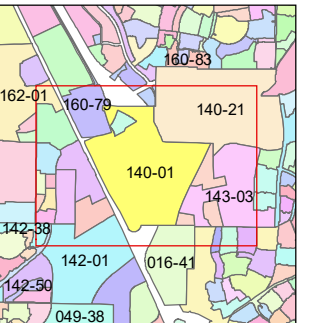
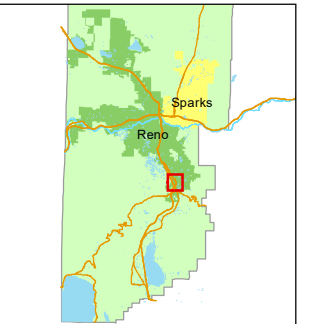
STATE OF NEVADA
WASHOE COUNTY
ASSESSOR'S OFFICE

1001 East Ninth Street, Building D
Reno, Nevada 89512
(775) 328-2231



Feet
0 125 250 375 500

1 inch = 500 feet



created by: NLH 01/10/2011

updated: KSB 05/06/19 SR 01/28/20

SR 08/30/21 SR 12/30/21 SR 01/24/22

area previously shown on map(s):

NOTE: This map was prepared for the use of the Washoe County Assessor for assessment and illustrative purposes only. It does not represent a survey of the premises. No liability is assumed as to the sufficiency or accuracy of the data delineated hereon.

