

Assessor's Map Number

130-38-S2

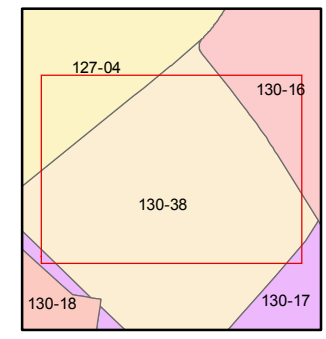
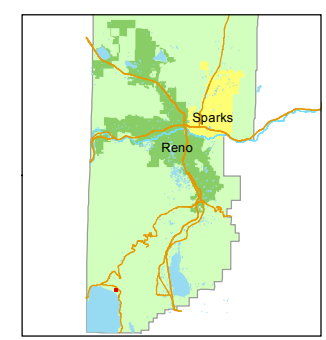
STATE OF NEVADA
WASHOE COUNTY
ASSESSOR'S OFFICE
Michael E. Clark, Assessor

1001 East Ninth Street
Building D
Reno, Nevada 89512
(775) 328-2231



Feet
0 10 20 30 40

1 inch = 50 feet



created by: SR 10/17/2017

last updated: _____

area previously shown on map(s)

NOTE: This map was prepared for the use of the Washoe County Assessor for assessment and illustrative purposes only. It does not represent a survey of the premises. No liability is assumed as to the sufficiency or accuracy of the data delineated hereon.